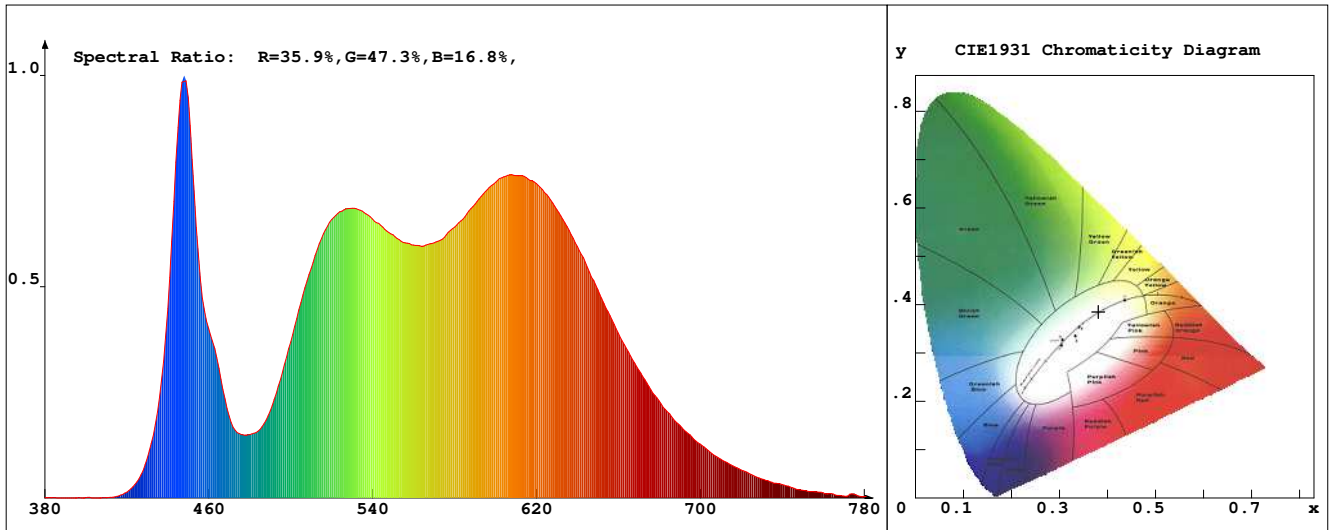


LED Test Report

Product Mark

Product Type : OR400F52400OM2
 Temperature : 'C
 Operator : -
 Remark :

Manufacturer : -
 Humidity : -%
 Test Date : 2024-02-15



Chroma Parameters

Chro.Coor.:x=0.3809 y=0.3854 u=0.2220 v=0.3369 duv=0.0039
 CCT: 4050K Dominant Wave.:576.9nm Purity:30.0% Centre Wave:447.5nm
 Flux RGB Ratio:R=18.7%,G=79.3%,B=1.9% Peak Wave:446.6nm Half Width:15.3nm

Rendering Index:Ra= 89.2 CRI= 85.2

R1 =92	R2 =91	R3 =89	R4 =92	R5 =90	R6 =87	R7 =91	R8 =82
R9 =47	R10=77	R11=91	R12=66	R13=91	R14=94	R15=86	
PPF:5.954umol/s (400-700nm)			PRF:1.3mW (400-700nm)			PAR:1.1mW (400-700nm)	

Photo Parameters

Flux:426.22lm Effi.:108.9lm/W Radiant:1294.5mW Iv:0.0mcd
 Scotopic Flux:732.2Plm Effi.:0.0Plm/W S/P:1.7
 Efficiency:0.00 Effi Level:A++ (EU 874-2012) Photon Flux:6131.780umol/s (380-780nm)

Ele. Parameters

Forward Current:If=163.0mA Reverse Voltage:Vr=5.00V
 Forward Voltage:Vf=24.00V Reverse Current:Ir=0.00uA
 Power:P=3.930W

Instrument state

Instrument:Lisun Integral Time: 322.534ms VPeak: 13560
 VDark: 1180 Scan Range: 380-780nm Product ID: 201508924

IES TM-30-2015 Test Report

Product Mark

Product Type : OR400F52400OM2

Temperature : 'C

Operator : -

Remark :

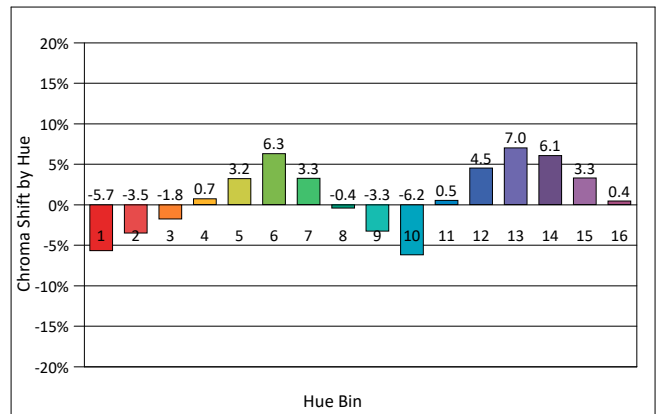
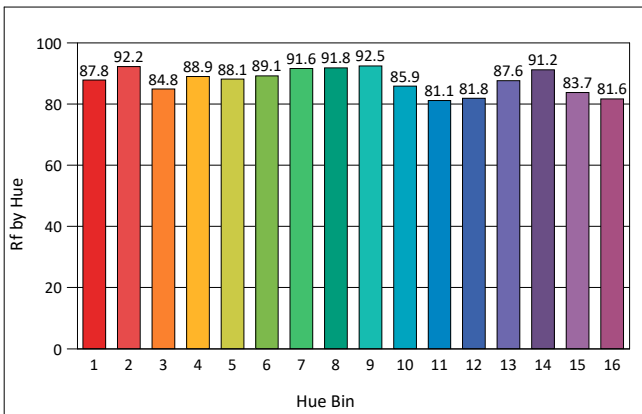
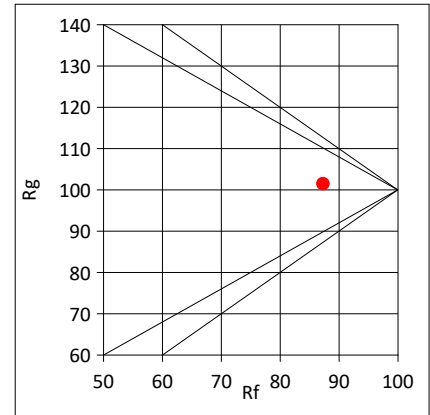
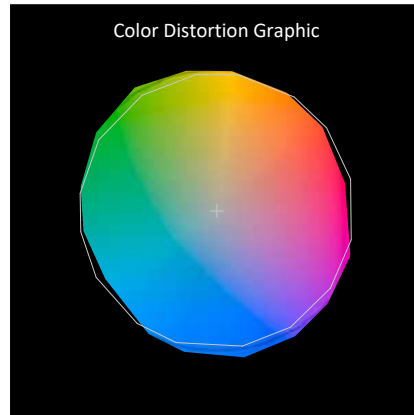
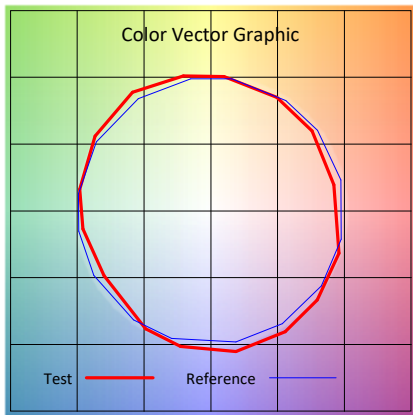
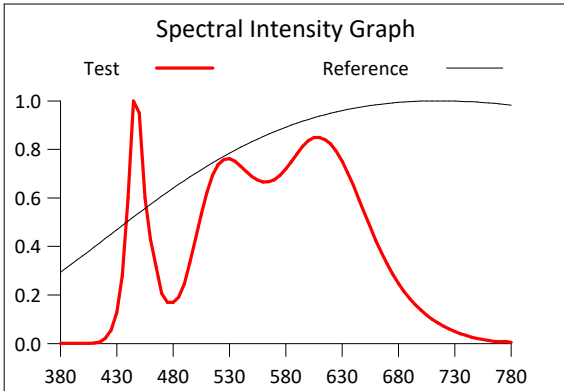
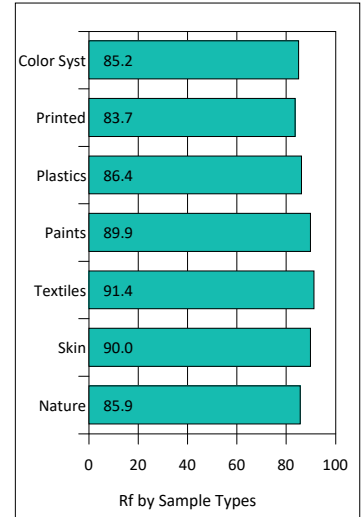
Manufacturer : -

Humidity : -%

Test Date : 2024-02-15

Rf: 87.3 CCT(K): 4050 u': 0.2220
 Rg: 101.4 LER: 322.7 Duv: 0.0039 v': 0.3369

Hue Bin	Rf	Graphic Shifts (%)	
		Chroma	Hue
1	87.8	-5.7%	-2.6%
2	92.2	-3.5%	1.8%
3	84.8	-1.8%	6.9%
4	88.9	0.7%	5.8%
5	88.1	3.2%	5.0%
6	89.1	6.3%	1.1%
7	91.6	3.3%	-3.2%
8	91.8	-0.4%	-3.7%
9	92.5	-3.3%	-1.1%
10	85.9	-6.2%	4.3%
11	81.1	0.5%	11.3%
12	81.8	4.5%	7.8%
13	87.6	7.0%	-1.4%
14	91.2	6.1%	-1.5%
15	83.7	3.3%	-10.5%
16	81.6	0.4%	-10.7%



IES TM-30-2015 Test Report

Product Mark

Product Type : OR400F52400OM2

Manufacturer : -

Temperature : 'C

Humidity : -%

Operator : -

Test Date : 2024-02-15

Remark :

