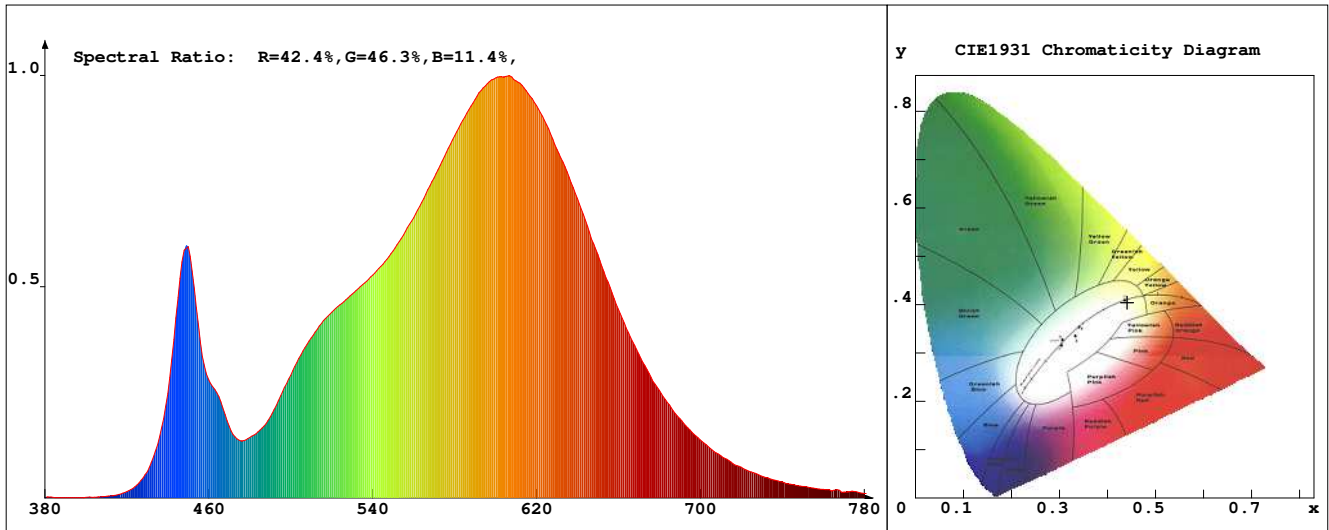


# LED Test Report

**Product Mark**

Product Type : OR30sK52120822/10  
 Temperature : 'C  
 Operator : -  
 Remark :

Manufacturer : -  
 Humidity : -%  
 Test Date : 2024-02-15



**Chroma Parameters**

Chro.Coord.:x=0.4407 y=0.4042 u=0.2530 v=0.3480 duv=-0.0005  
 CCT: 2938K Dominant Wave.:583.2nm Purity:53.6% Centre Wave:594.0nm  
 Flux RGB Ratio:R=22.2%,G=76.4%,B=1.4% Peak Wave:604.8nm Half Width:120.9nm

**Rendering Index:Ra= 80.9 CRI= 78.0**

R1 =79	R2 =89	R3 =97	R4 =80	R5 =80	R6 =87	R7 =81	R8 =55
R9 =-0	R10=75	R11=79	R12=69	R13=81	R14=99	R15=71	
PPF:11.512umol/s (400-700nm)			PRF:2.4mW (400-700nm)			PAR:2.1mW (400-700nm)	

**Photo Parameters**

Flux:854.17lm      Effi.:115.0lm/W      Radiant:2450.9mW      Iv:0.0mcd  
 Scotopic Flux:1103.9Plm      Effi.:0.0Plm/W      S/P:1.3  
 Efficiency:0.00      Effi Level:A++ (EU 874-2012)      Photon Flux:11907.800umol/s (380-780nm)

**Ele. Parameters**

Forward Current:If=309.0mA      Reverse Voltage:Vr=5.00V  
 Forward Voltage:Vf=24.04V      Reverse Current:Ir=0.00uA  
 Power:P=7.441W

**Instrument state**

Instrument:Lisun      Integral Time: 196.392ms      VPeak: 14984  
 VDark: 1215      Scan Range: 380-780nm      Product ID: 201508924

# IES TM-30-2015 Test Report

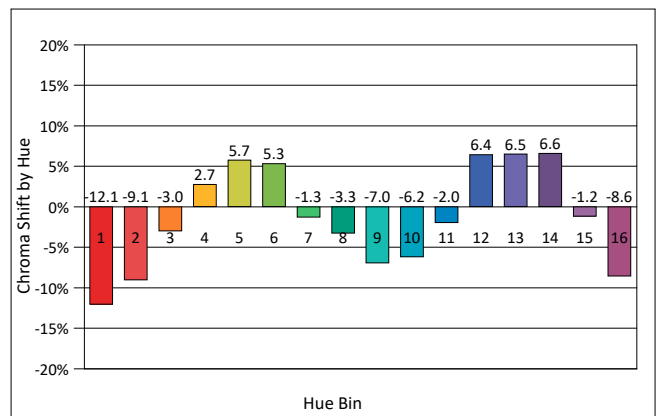
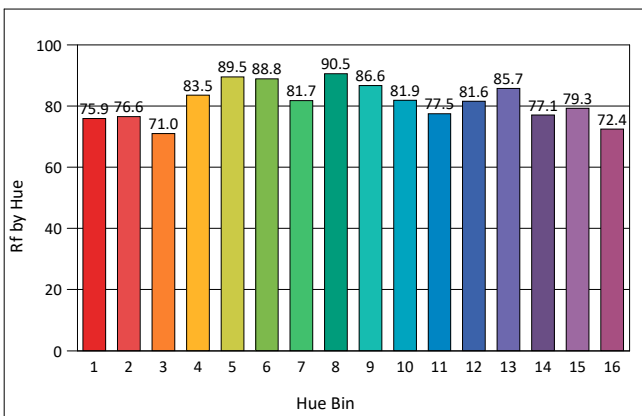
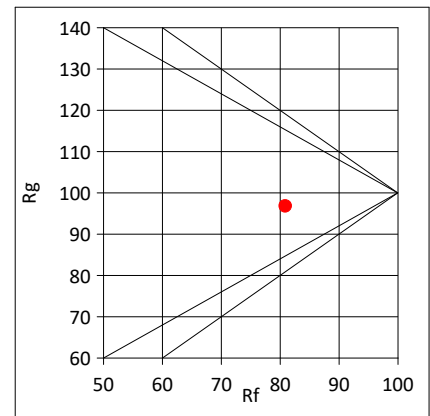
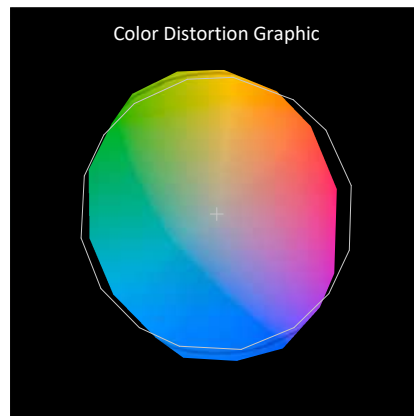
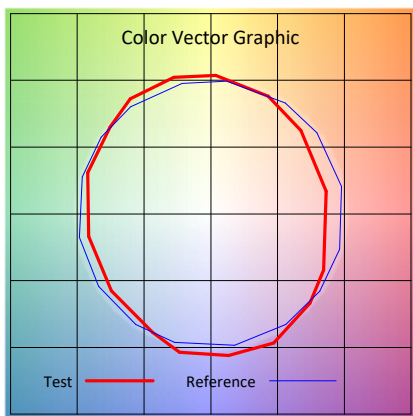
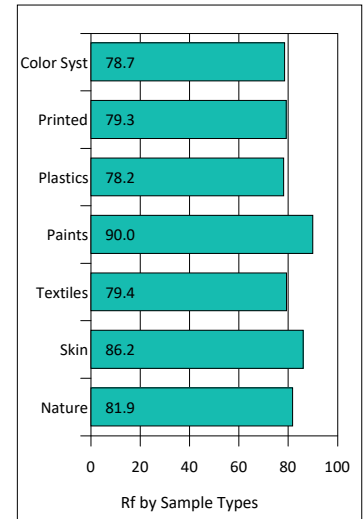
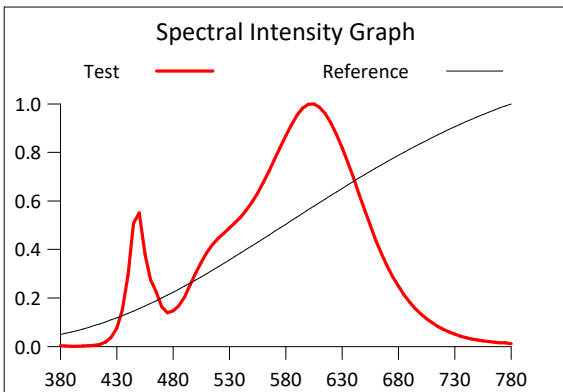
**Product Mark**

Product Type : OR30sK52120822/10  
 Temperature : 'C  
 Operator : -  
 Remark :

Manufacturer : -  
 Humidity : -%  
 Test Date : 2024-02-15

Rf: 80.9      CCT(K): 2938      u': 0.2530  
 Rg: 96.8      LER: 334.6      Duv: -0.0005      v': 0.3480

Hue Bin	Rf	Graphic Shifts (%)	
		Chroma	Hue
1	75.9	-12.1%	-1.4%
2	76.6	-9.1%	7.9%
3	71.0	-3.0%	13.5%
4	83.5	2.7%	9.0%
5	89.5	5.7%	5.3%
6	88.8	5.3%	-3.2%
7	81.7	-1.3%	-10.1%
8	90.5	-3.3%	-3.8%
9	86.6	-7.0%	0.6%
10	81.9	-6.2%	8.1%
11	77.5	-2.0%	14.0%
12	81.6	6.4%	5.2%
13	85.7	6.5%	-5.8%
14	77.1	6.6%	-15.4%
15	79.3	-1.2%	-11.5%
16	72.4	-8.6%	-17.7%



# IES TM-30-2015 Test Report

**Product Mark**

Product Type : OR30sK52120822/10

Manufacturer : -

Temperature : 'C

Humidity : -%

Operator : -

Test Date : 2024-02-15

Remark :

