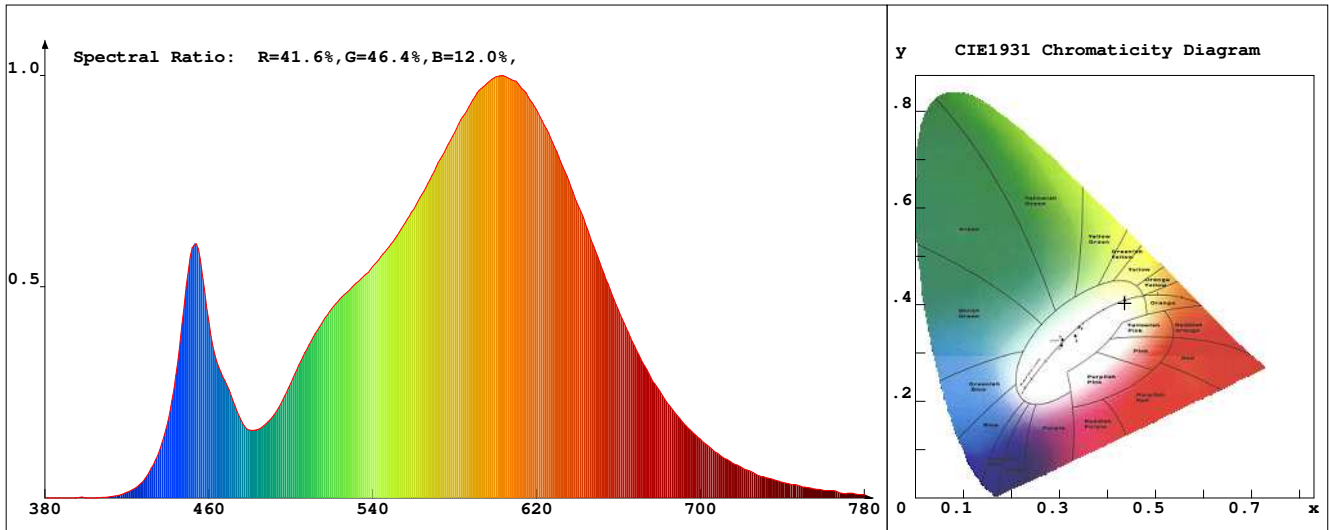


LED Test Report

Product Mark

Product Type : OR30sF52x240DF2/20
 Temperature : 'C
 Operator : -
 Remark :

Manufacturer : -
 Humidity : -%
 Test Date : 2024-02-15



Chroma Parameters

Chro.Coord.:x=0.4357 y=0.4027 u=0.2504 v=0.3471 duv=-0.0004
 CCT: 3009K Dominant Wave.:582.9nm Purity:51.7% Centre Wave:591.6nm
 Flux RGB Ratio:R=21.7%,G=76.7%,B=1.6% Peak Wave:600.7nm Half Width:125.4nm

Rendering Index:Ra= 80.7 CRI= 77.6

R1 =79	R2 =89	R3 =96	R4 =78	R5 =79	R6 =87	R7 =82	R8 =56
R9 =0	R10=75	R11=77	R12=65	R13=81	R14=98	R15=71	
PPF:39.939umol/s (400-700nm)			PRF:8.3mW (400-700nm)			PAR:7.4mW (400-700nm)	

Photo Parameters

Flux:2945.76lm Effi.:158.2lm/W Radiant:8508.5mW Iv:0.0mcd
 Scotopic Flux:3888.0Plm Effi.:0.0Plm/W S/P:1.3
 Efficiency:0.00 Effi Level:A++ (EU 874-2012) Photon Flux:41266.801umol/s (380-780nm)

Ele. Parameters

Forward Current:If=775.0mA Reverse Voltage:Vr=5.00V
 Forward Voltage:Vf=24.03V Reverse Current:Ir=0.00uA
 Power:P=18.620W

Instrument state

Instrument:Lisun Integral Time: 54.979ms VPeak: 15736
 VDark: 1213 Scan Range: 380-780nm Product ID: 201508924

IES TM-30-2015 Test Report

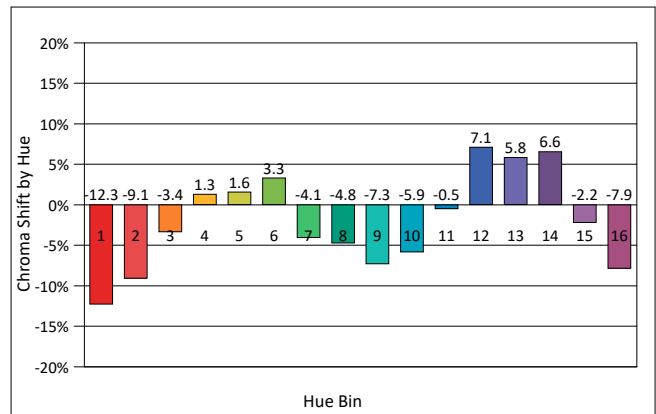
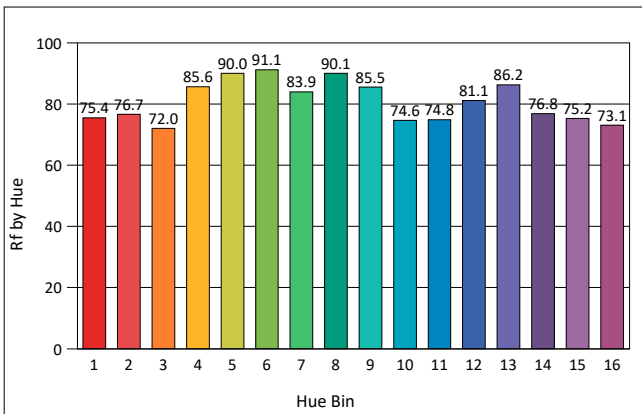
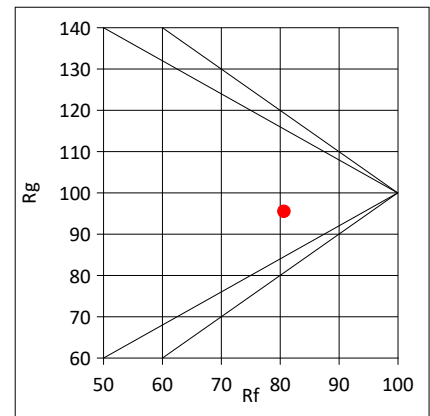
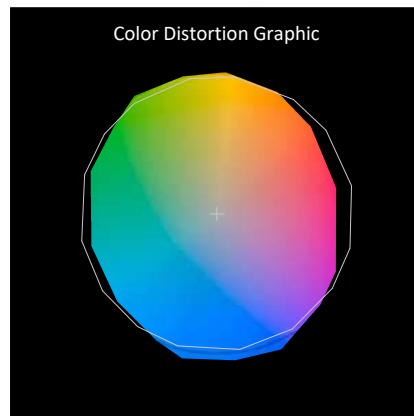
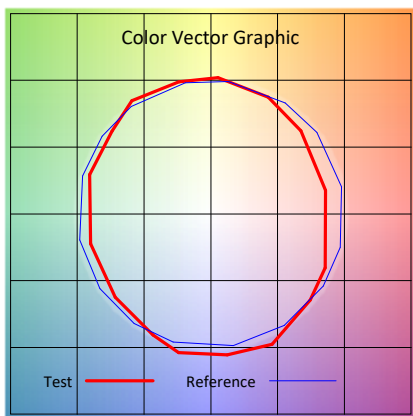
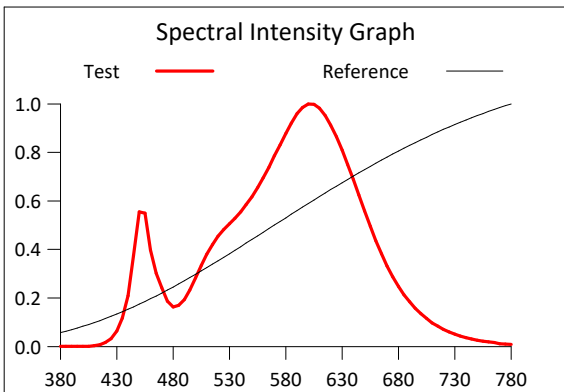
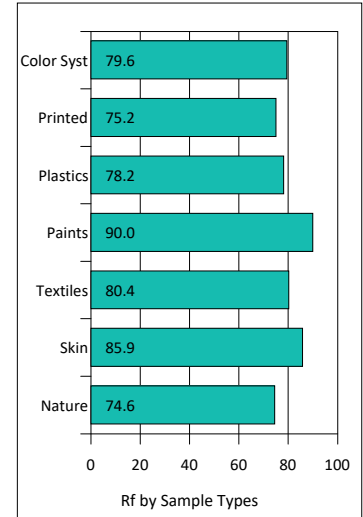
Product Mark

Product Type : OR30sF52x240DF2/20
 Temperature : 'C
 Operator : -
 Remark :

Manufacturer : -
 Humidity : -%
 Test Date : 2024-02-15

Rf: 80.7 CCT(K): 3009 u': 0.2504
 Rg: 95.5 LER: 335.9 Duv: -0.0004 v': 0.3471

Hue Bin	Graphic Shifts (%)		
	Rf	Chroma	Hue
1	75.4	-12.3%	-0.3%
2	76.7	-9.1%	7.7%
3	72.0	-3.4%	12.8%
4	85.6	1.3%	8.1%
5	90.0	1.6%	4.5%
6	91.1	3.3%	-3.0%
7	83.9	-4.1%	-7.5%
8	90.1	-4.8%	-2.0%
9	85.5	-7.3%	4.4%
10	74.6	-5.9%	11.7%
11	74.8	-0.5%	16.5%
12	81.1	7.1%	5.5%
13	86.2	5.8%	-6.0%
14	76.8	6.6%	-15.4%
15	75.2	-2.2%	-14.3%
16	73.1	-7.9%	-17.2%



IES TM-30-2015 Test Report

Product Mark

Product Type : OR30sF52x240DF2/20

Manufacturer : -

Temperature : 'C

Humidity : -%

Operator : -

Test Date : 2024-02-15

Remark :

