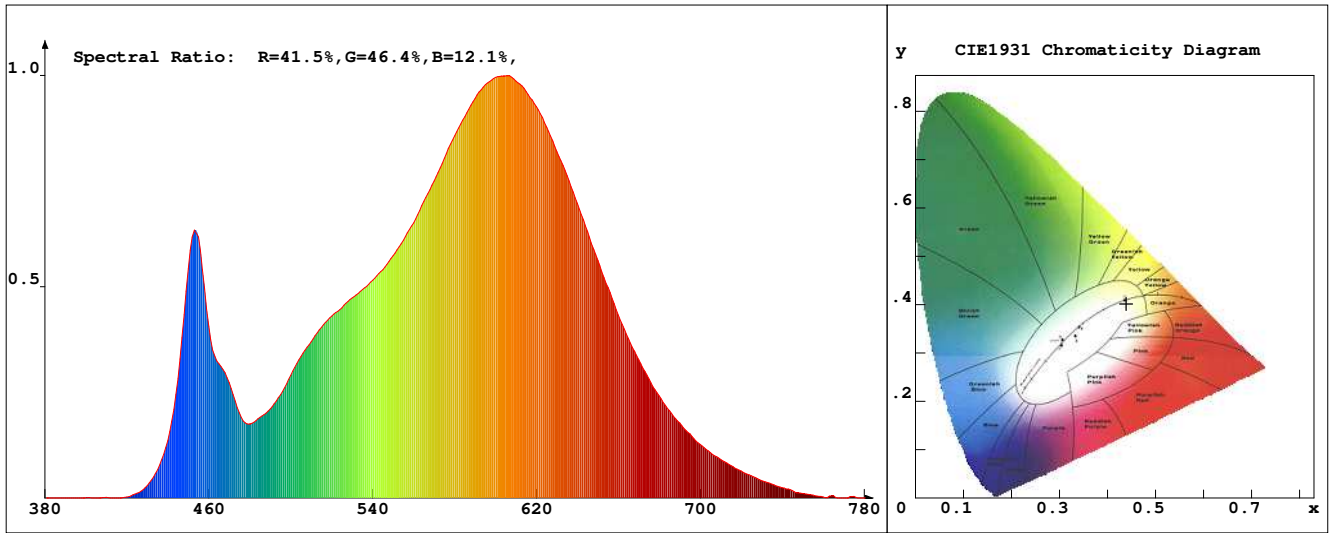


# LED Test Report

**Product Mark**

Product Type : OR30sF52156821-W5  
 Temperature : 'C  
 Operator : -  
 Remark:

Manufacturer : -  
 Humidity : -%  
 Test Date : 2024-02-15



**Chroma Parameters**

Chro.Coor.:x=0.4388 y=0.4017 u=0.2528 v=0.3472 duv=-0.0012  
 CCT: 2948K Dominant Wave.:583.5nm Purity:52.3% Centre Wave:595.1nm  
 Flux RGB Ratio:R=22.2%,G=76.1%,B=1.7% Peak Wave:603.8nm Half Width:117.1nm

**Rendering Index:Ra= 80.9 CRI= 78.3**

R1 =79	R2 =90	R3 =96	R4 =79	R5 =81	R6 =89	R7 =79	R8 =54
R9 =-0	R10=79	R11=78	R12=69	R13=81	R14=99	R15=71	
PPF:5.352umol/s (400-700nm)			PRF:1.1mW (400-700nm)			PAR:1.0mW (400-700nm)	

**Photo Parameters**

Flux:395.63lm      Effi.:127.8lm/W      Radiant:1132.6mW      Iv:0.0mcd  
 Scotopic Flux:526.2Plm      Effi.:0.0Plm/W      S/P:1.3  
 Efficiency:0.00      Effi Level:A++ (EU 874-2012)      Photon Flux:5486.710umol/s (380-780nm)

**Ele. Parameters**

Forward Current:If=258.0mA      Reverse Voltage:Vr=5.00V  
 Forward Voltage:Vf=12.00V      Reverse Current:Ir=0.00uA  
 Power:P=3.100W

**Instrument state**

Instrument:Lisun      Integral Time: 360.845ms      VPeak: 13128  
 VDark: 1295      Scan Range: 380-780nm      Product ID: 201508924

# IES TM-30-2015 Test Report

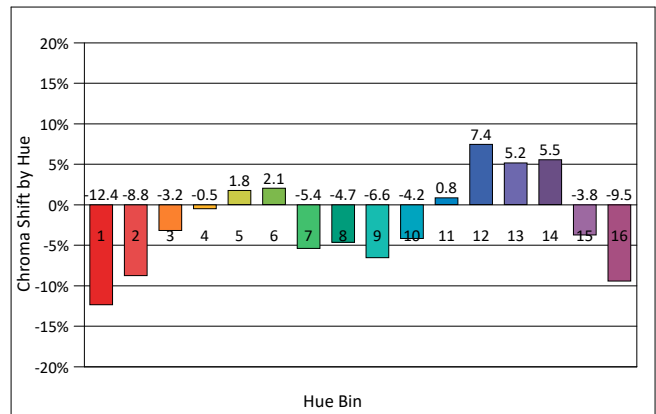
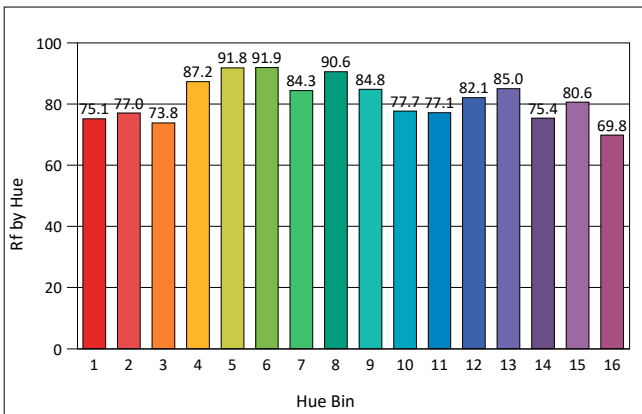
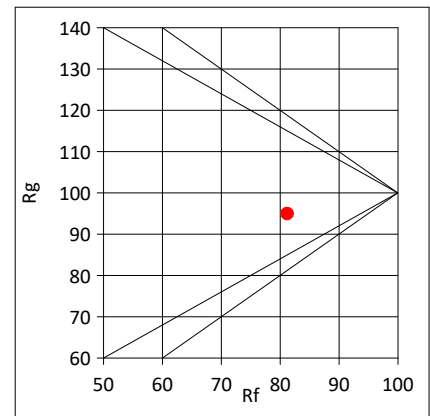
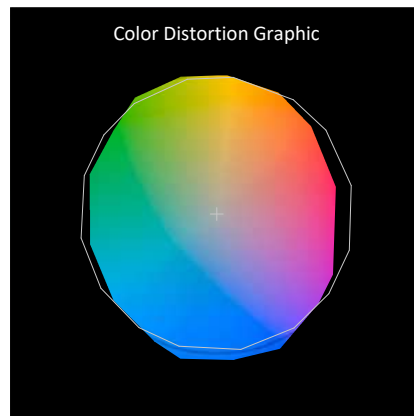
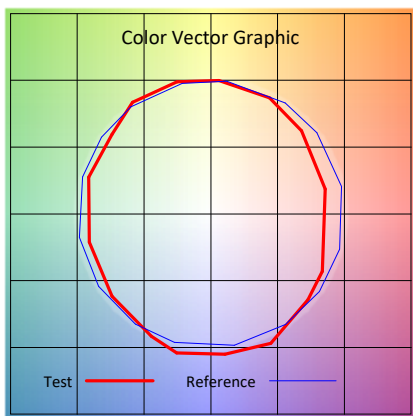
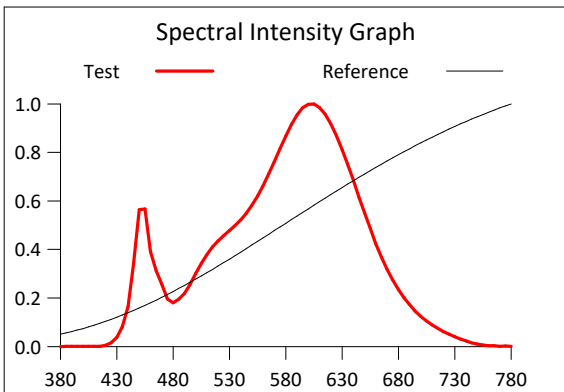
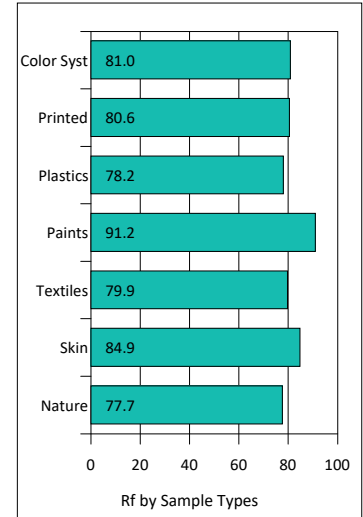
**Product Mark**

Product Type : OR30sF52156821-W5  
 Temperature : 'C  
 Operator : -  
 Remark :

Manufacturer : -  
 Humidity : -%  
 Test Date : 2024-02-15

Rf: 81.2      CCT(K): 2948      u': 0.2528  
 Rg: 94.9      LER: 336.6      Duv: -0.0012      v': 0.3472

Hue Bin	Graphic Shifts (%)		
	Rf	Chroma	Hue
1	75.1	-12.4%	0.4%
2	77.0	-8.8%	7.7%
3	73.8	-3.2%	11.9%
4	87.2	-0.5%	5.8%
5	91.8	1.8%	3.6%
6	91.9	2.1%	-3.0%
7	84.3	-5.4%	-6.2%
8	90.6	-4.7%	-0.7%
9	84.8	-6.6%	5.1%
10	77.7	-4.2%	12.0%
11	77.1	0.8%	14.9%
12	82.1	7.4%	3.3%
13	85.0	5.2%	-8.1%
14	75.4	5.5%	-17.2%
15	80.6	-3.8%	-10.0%
16	69.8	-9.5%	-18.8%



# IES TM-30-2015 Test Report

**Product Mark**

Product Type : OR30sF52156821-W5

Manufacturer : -

Temperature : 'C

Humidity : -%

Operator : -

Test Date : 2024-02-15

Remark :

