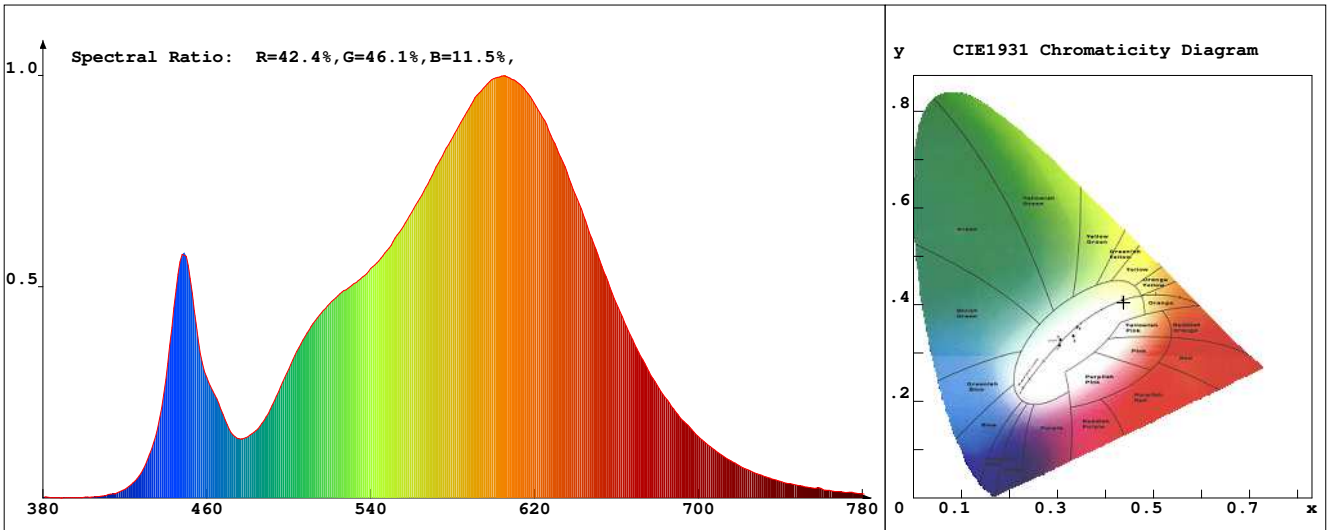


LED Test Report

Product Mark

Product Type : OR30sF52128824A
 Temperature : 'C
 Operator : -
 Remark :

Manufacturer : -
 Humidity : -%
 Test Date : 2024-02-15



Chroma Parameters

Chro.Coor.:x=0.4379 y=0.4041 u=0.2512 v=0.3477 duv=-0.0001
 CCT: 2984K Dominant Wave.:582.9nm Purity:52.8% Centre Wave:592.2nm
 Flux RGB Ratio:R=22.1%,G=76.5%,B=1.4% Peak Wave:604.8nm Half Width:126.6nm

Rendering Index:Ra= 82.0 CRI= 79.0

R1 =80	R2 =89	R3 =97	R4 =81	R5 =81	R6 =88	R7 =83	R8 =58
R9 =5	R10=76	R11=81	R12=71	R13=82	R14=99	R15=73	
PPF:28.738umol/s (400-700nm)			PRF:6.0mW (400-700nm)			PAR:5.3mW (400-700nm)	

Photo Parameters

Flux:2105.38lm Effi.:161.7lm/W Radiant:6126.7mW Iv:0.0mcd
 Scotopic Flux:2764.3Plm Effi.:0.0Plm/W S/P:1.3
 Efficiency:0.00 Effi Level:A++ (EU 874-2012) Photon Flux:29754.500umol/s (380-780nm)

Ele. Parameters

Forward Current:If=286.0mA Reverse Voltage:Vr=5.00V
 Forward Voltage:Vf=45.52V Reverse Current:Ir=0.00uA
 Power:P=13.031W

Instrument state

Instrument:Lisun Integral Time: 76.211ms VPeak: 15368
 VDark: 1225 Scan Range: 380-780nm Product ID: 201508924

IES TM-30-2015 Test Report

Product Mark

Product Type : OR30sF52128824A

Temperature : 'C

Operator : -

Remark :

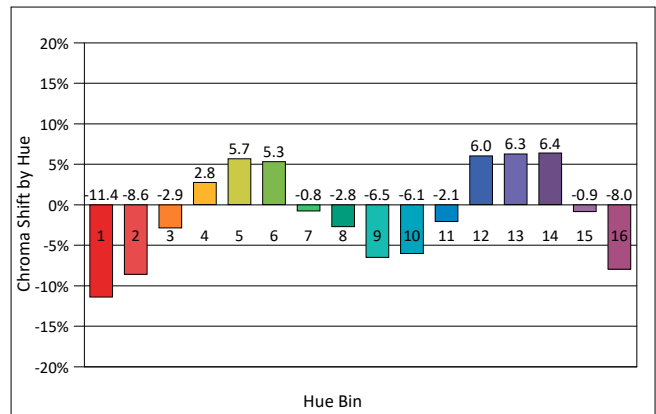
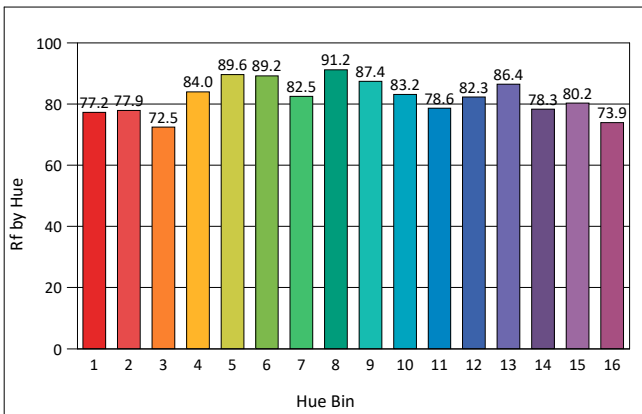
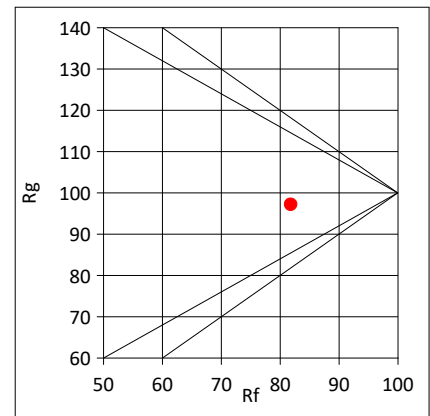
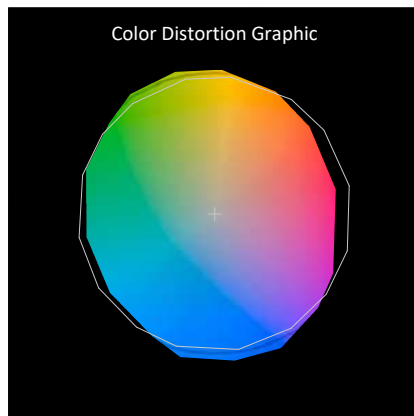
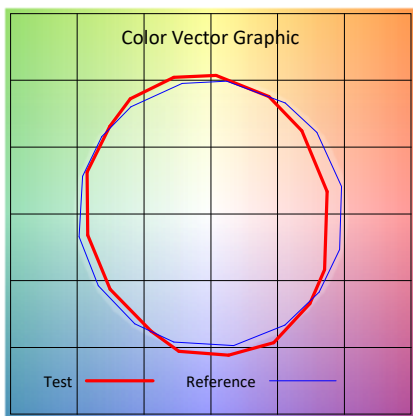
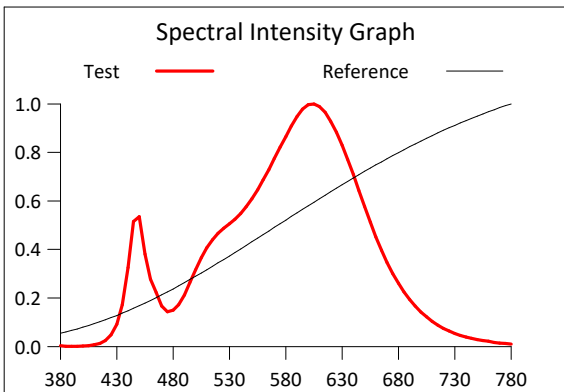
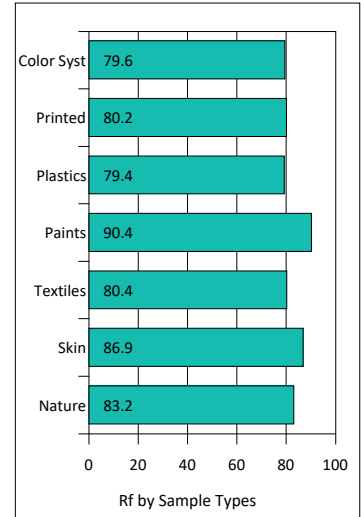
Manufacturer : -

Humidity : -%

Test Date : 2024-02-15

Rf: 81.8 CCT(K): 2984 u': 0.2512
 Rg: 97.2 LER: 332.6 Duv: -0.0001 v': 0.3477

Hue Bin	Rf	Graphic Shifts (%)	
		Chroma	Hue
1	77.2	-11.4%	-1.5%
2	77.9	-8.6%	7.4%
3	72.5	-2.9%	12.8%
4	84.0	2.8%	8.7%
5	89.6	5.7%	5.3%
6	89.2	5.3%	-2.8%
7	82.5	-0.8%	-9.7%
8	91.2	-2.8%	-3.8%
9	87.4	-6.5%	0.1%
10	83.2	-6.1%	7.3%
11	78.6	-2.1%	13.3%
12	82.3	6.0%	5.1%
13	86.4	6.3%	-5.3%
14	78.3	6.4%	-14.4%
15	80.2	-0.9%	-11.0%
16	73.9	-8.0%	-16.9%



IES TM-30-2015 Test Report

Product Mark

Product Type : OR30sF52128824A

Manufacturer : -

Temperature : 'C

Humidity : -%

Operator : -

Test Date : 2024-02-15

Remark :

