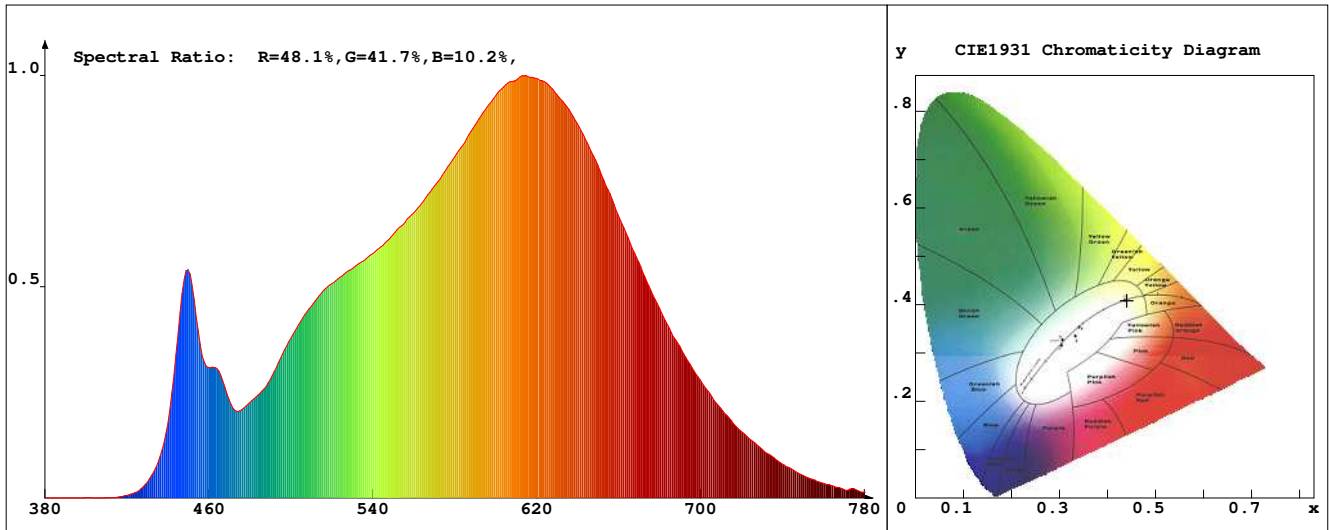


LED Test Report

Product Mark

Product Type : OR300Y524800M2
 Temperature : 'C
 Operator : -
 Remark :

Manufacturer : -
 Humidity : -%
 Test Date : 2024-02-13



Chroma Parameters

Chro.Coor.:x=0.4406 y=0.4086 u=0.2510 v=0.3491 duv=0.0013
 CCT: 2975K Dominant Wave.:582.5nm Purity:54.9% Centre Wave:595.7nm
 Flux RGB Ratio:R=23.2%,G=75.1%,B=1.7% Peak Wave:613.6nm Half Width:155.7nm

Rendering Index:Ra= 90.1 CRI= 87.3

R1 =88	R2 =94	R3 =98	R4 =93	R5 =92	R6 =94	R7 =88	R8 =74
R9 =44	R10=87	R11=94	R12=80	R13=89	R14=98	R15=83	
PPF:9.227umol/s (400-700nm)			PRF:1.9mW (400-700nm)			PAR:1.7mW (400-700nm)	

Photo Parameters

Flux:638.56lm Effi.:85.0lm/W Radiant:1985.8mW Iv:0.0mcd
 Scotopic Flux:892.2Plm Effi.:0.0Plm/W S/P:1.4
 Efficiency:0.00 Effi Level:A++ (EU 874-2012) Photon Flux:9796.040umol/s (380-780nm)

Ele. Parameters

Forward Current:If=313.0mA Reverse Voltage:Vr=5.00V
 Forward Voltage:Vf=24.00V Reverse Current:Ir=0.00uA
 Power:P=7.531W

Instrument state

Instrument:Lisun Integral Time: 256.000ms VPeak: 13144
 VDark: 1151 Scan Range: 380-780nm Product ID: 201508924

IES TM-30-2015 Test Report

Product Mark

Product Type : OR300Y524800M2

Temperature : 'C

Operator : -

Remark :

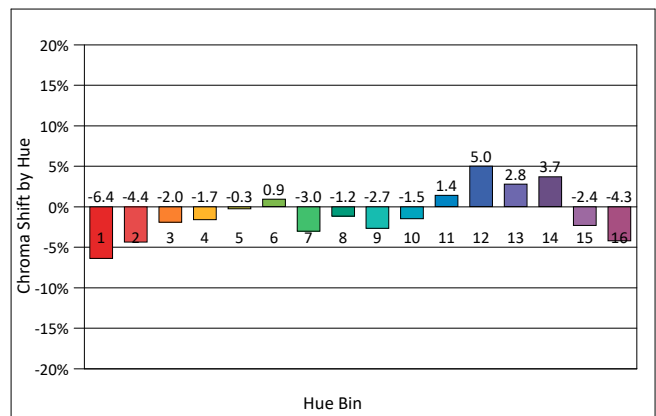
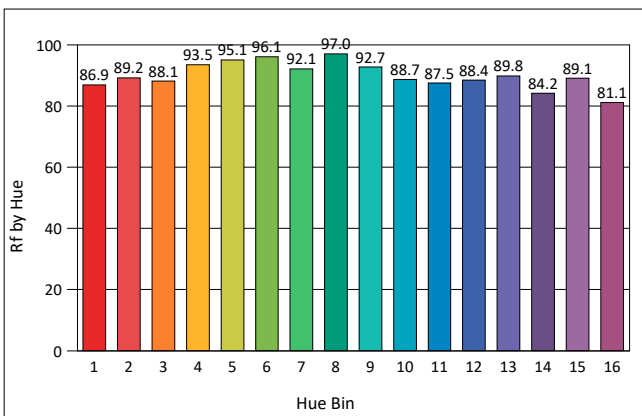
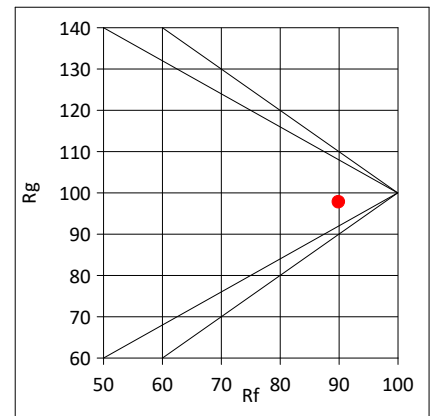
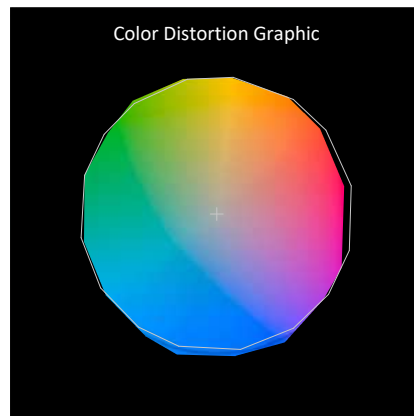
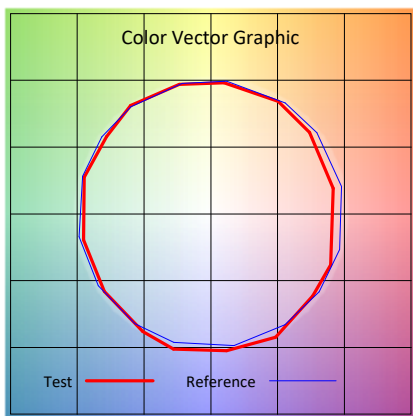
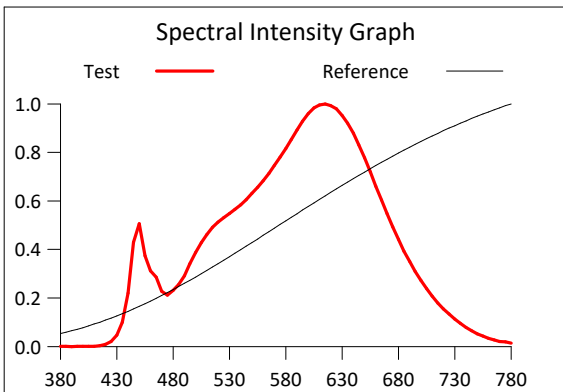
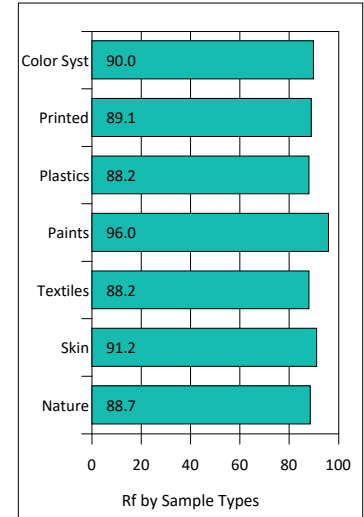
Manufacturer : -

Humidity : -%

Test Date : 2024-02-13

Rf: 89.9 CCT(K): 2975 u': 0.2510
 Rg: 97.8 LER: 302.6 Duv: 0.0013 v': 0.3491

Hue Bin	Rf	Graphic Shifts (%)	
		Chroma	Hue
1	86.9	-6.4%	-0.2%
2	89.2	-4.4%	3.1%
3	88.1	-2.0%	5.1%
4	93.5	-1.7%	1.7%
5	95.1	-0.3%	2.2%
6	96.1	0.9%	-0.4%
7	92.1	-3.0%	-2.2%
8	97.0	-1.2%	0.4%
9	92.7	-2.7%	2.8%
10	88.7	-1.5%	6.1%
11	87.5	1.4%	8.1%
12	88.4	5.0%	0.6%
13	89.8	2.8%	-6.2%
14	84.2	3.7%	-11.0%
15	89.1	-2.4%	-5.3%
16	81.1	-4.3%	-12.7%



IES TM-30-2015 Test Report

Product Mark

Product Type : OR300Y524800M2

Manufacturer : -

Temperature : 'C

Humidity : -%

Operator : -

Test Date : 2024-02-13

Remark :

