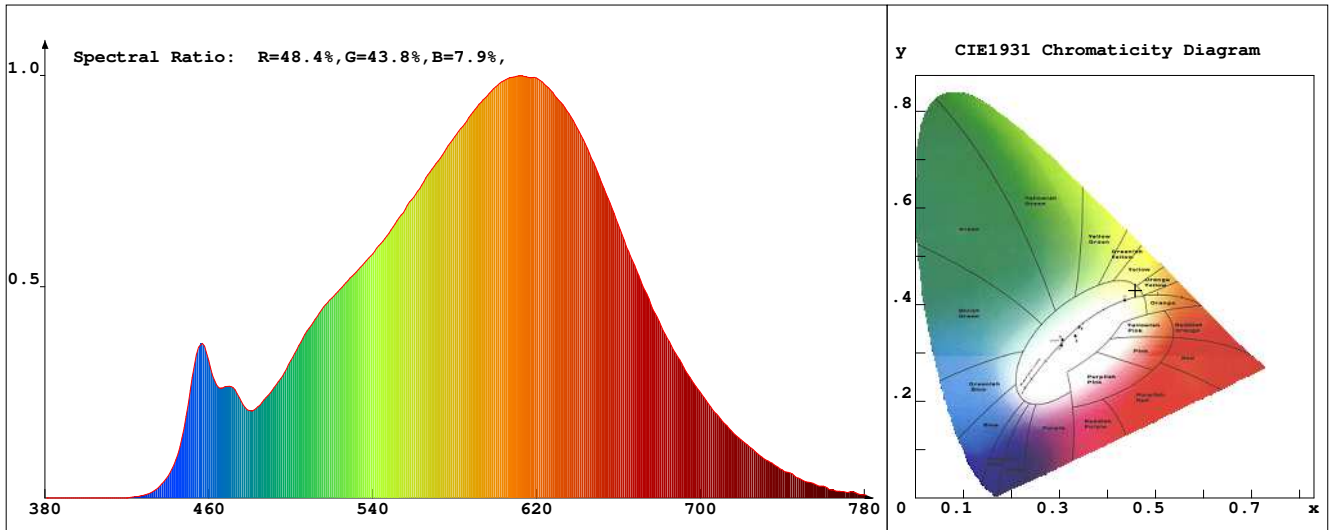


LED Test Report

Product Mark

Product Type : OR300TL52120822/10
 Temperature : 'C
 Operator : -
 Remark :

Manufacturer : -
 Humidity : -%
 Test Date : 2024-02-15



Chroma Parameters

Chro.Coord.:x=0.4577 y=0.4294 u=0.2530 v=0.3560 duv=0.0071
 CCT: 2874K Dominant Wave.:581.3nm Purity:66.3% Centre Wave:597.6nm
 Flux RGB Ratio:R=22.9%,G=75.6%,B=1.5% Peak Wave:613.6nm Half Width:146.7nm

Rendering Index:Ra= 85.5 CRI= 81.6

R1 =83	R2 =90	R3 =98	R4 =84	R5 =84	R6 =91	R7 =87	R8 =68
R9 =28	R10=79	R11=83	R12=67	R13=84	R14=98	R15=76	
PPF:10.166umol/s (400-700nm)			PRF:2.1mW (400-700nm)			PAR:1.8mW (400-700nm)	

Photo Parameters

Flux:713.31lm Effi.:94.5lm/W Radiant:2161.5mW Iv:0.0mcd
 Scotopic Flux:915.4Plm Effi.:0.0Plm/W S/P:1.3
 Efficiency:0.00 Effi Level:A++ (EU 874-2012) Photon Flux:10713.000umol/s (380-780nm)

Ele. Parameters

Forward Current:If=314.0mA Reverse Voltage:Vr=5.00V
 Forward Voltage:Vf=24.04V Reverse Current:Ir=0.00uA
 Power:P=7.560W

Instrument state

Instrument:Lisun Integral Time: 244.364ms VPeak: 14840
 VDark: 1234 Scan Range: 380-780nm Product ID: 201508924

IES TM-30-2015 Test Report

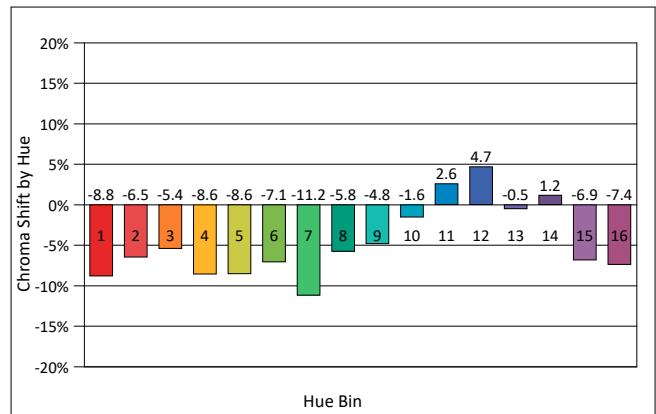
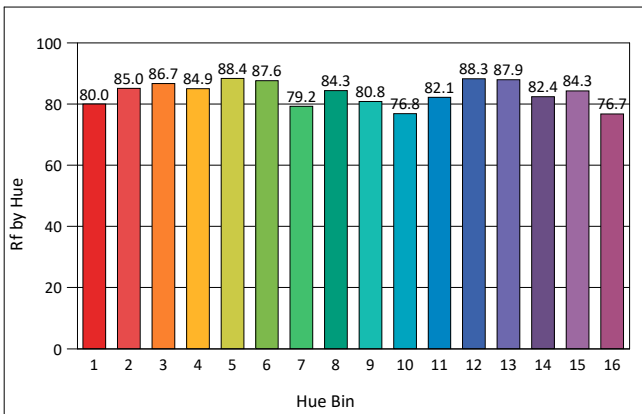
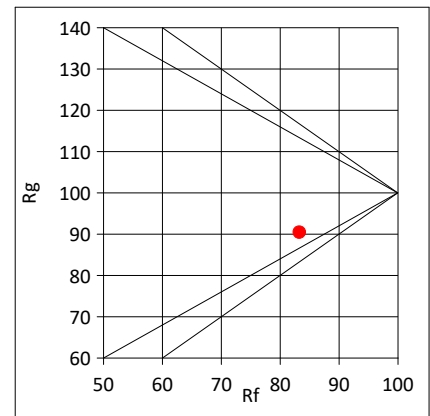
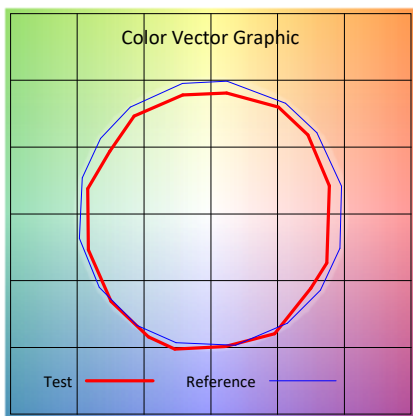
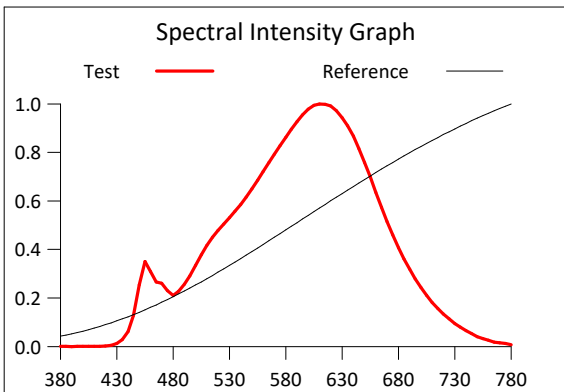
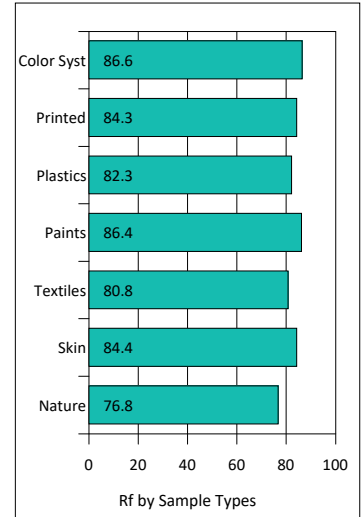
Product Mark

Product Type : OR300TL52120822/10
 Temperature : 'C
 Operator : -
 Remark :

Manufacturer : -
 Humidity : -%
 Test Date : 2024-02-15

Rf: 83.3 CCT(K): 2874 u': 0.2530
 Rg: 90.4 LER: 319.3 Duv: 0.0071 v': 0.3560

Hue Bin	Rf	Graphic Shifts (%)	
		Chroma	Hue
1	80.0	-8.8%	1.9%
2	85.0	-6.5%	2.4%
3	86.7	-5.4%	2.8%
4	84.9	-8.6%	-1.5%
5	88.4	-8.6%	1.3%
6	87.6	-7.1%	1.2%
7	79.2	-11.2%	4.2%
8	84.3	-5.8%	7.2%
9	80.8	-4.8%	9.9%
10	76.8	-1.6%	13.6%
11	82.1	2.6%	11.9%
12	88.3	4.7%	0.0%
13	87.9	-0.5%	-7.8%
14	82.4	1.2%	-12.3%
15	84.3	-6.9%	-2.8%
16	76.7	-7.4%	-12.7%



IES TM-30-2015 Test Report

Product Mark

Product Type : OR300TL52120822/10

Manufacturer : -

Temperature : 'C

Humidity : -%

Operator : -

Test Date : 2024-02-15

Remark :

