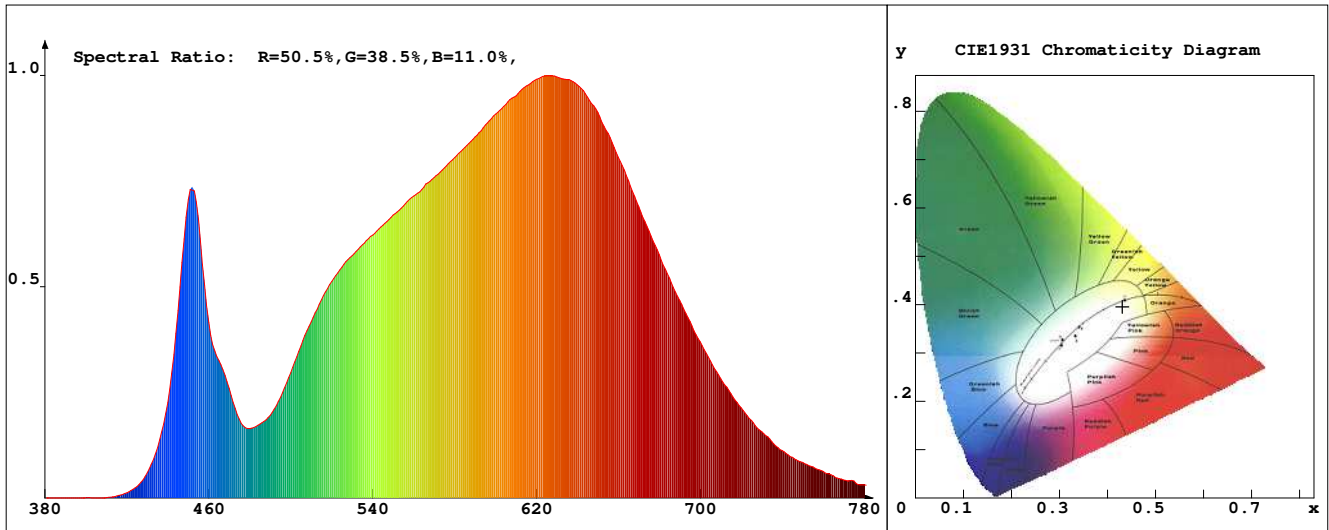


LED Test Report

Product Mark

Product Type : OR300NT041408Z2-5F3
 Temperature : 'C
 Operator : -
 Remark :

Manufacturer : -
 Humidity : -%
 Test Date : 2024-02-13



Chroma Parameters

Chro.Coor.:x=0.4313 y=0.3954 u=0.2507 v=0.3447 duv=-0.0027
 CCT: 3025K Dominant Wave.:583.8nm Purity:48.1% Centre Wave:601.7nm
 Flux RGB Ratio:R=23.2%,G=75.1%,B=1.7% Peak Wave:627.5nm Half Width:167.3nm

Rendering Index:Ra= 91.1 CRI= 88.3

R1 =92	R2 =94	R3 =93	R4 =91	R5 =91	R6 =91	R7 =92	R8 =85
R9 =65	R10=84	R11=91	R12=73	R13=92	R14=95	R15=90	
PPF:9.037umol/s (400-700nm)			PRF:1.8mW (400-700nm)			PAR:1.6mW (400-700nm)	

Photo Parameters

Flux:586.36lm Effi.:63.8lm/W Radiant:1968.1mW Iv:0.0mcd
 Scotopic Flux:813.8Plm Effi.:0.0Plm/W S/P:1.4
 Efficiency:0.00 Effi Level:A++ (EU 874-2012) Photon Flux:9770.580umol/s (380-780nm)

Ele. Parameters

Forward Current:If=383.0mA Reverse Voltage:Vr=5.00V
 Forward Voltage:Vf=24.00V Reverse Current:Ir=0.00uA
 Power:P=9.191W

Instrument state

Instrument:Lisun Integral Time: 293.082ms VPeak: 14728
 VDark: 1119 Scan Range: 380-780nm Product ID: 201508924

IES TM-30-2015 Test Report

Product Mark

Product Type : OR300NT041408Z2-5F3

Temperature : 'C

Operator : -

Remark :

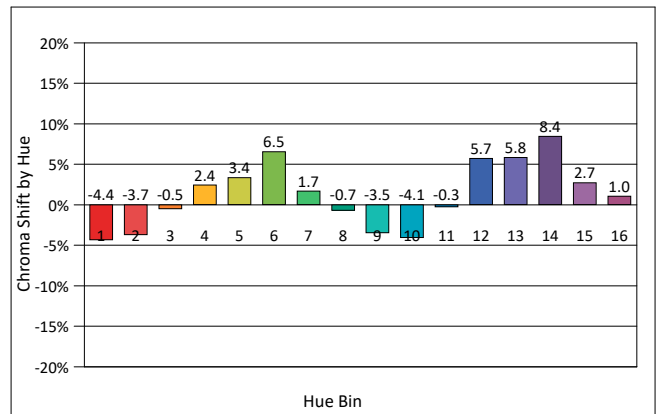
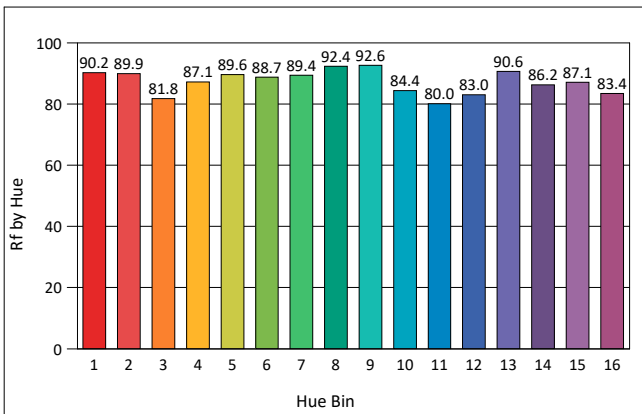
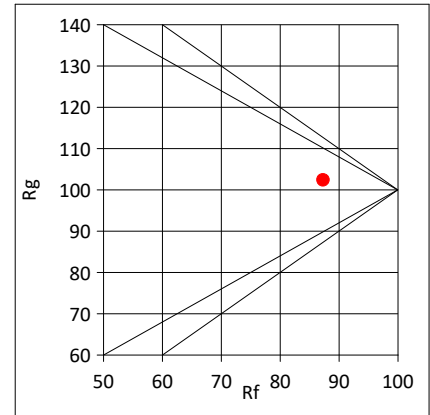
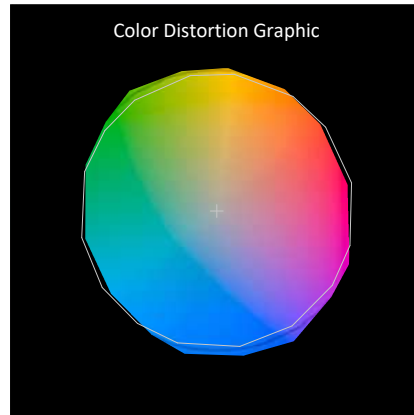
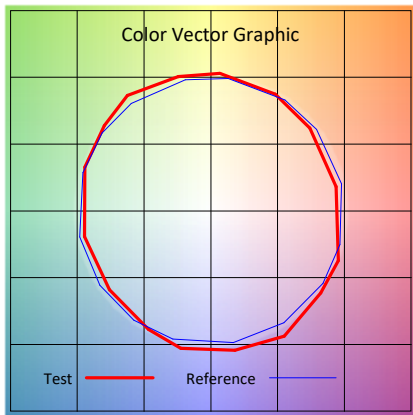
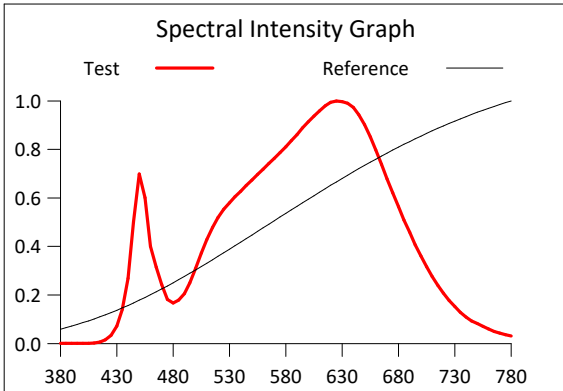
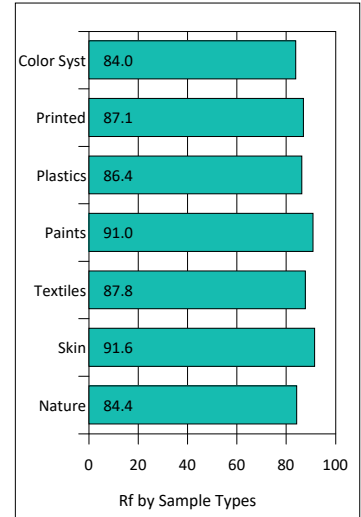
Manufacturer : -

Humidity : -%

Test Date : 2024-02-13

Rf: 87.3 CCT(K): 3025 u': 0.2507
 Rg: 102.4 LER: 284.3 Duv: -0.0027 v': 0.3447

Hue Bin	Rf	Graphic Shifts (%)	
		Chroma	Hue
1	90.2	-4.4%	-1.3%
2	89.9	-3.7%	3.6%
3	81.8	-0.5%	8.5%
4	87.1	2.4%	6.8%
5	89.6	3.4%	4.7%
6	88.7	6.5%	-1.0%
7	89.4	1.7%	-5.5%
8	92.4	-0.7%	-4.3%
9	92.6	-3.5%	0.6%
10	84.4	-4.1%	6.9%
11	80.0	-0.3%	13.1%
12	83.0	5.7%	7.3%
13	90.6	5.8%	0.2%
14	86.2	8.4%	-5.3%
15	87.1	2.7%	-7.0%
16	83.4	1.0%	-12.1%



IES TM-30-2015 Test Report

Product Mark

Product Type : OR300NT041408Z2-5F3

Manufacturer : -

Temperature : 'C

Humidity : -%

Operator : -

Test Date : 2024-02-13

Remark :

