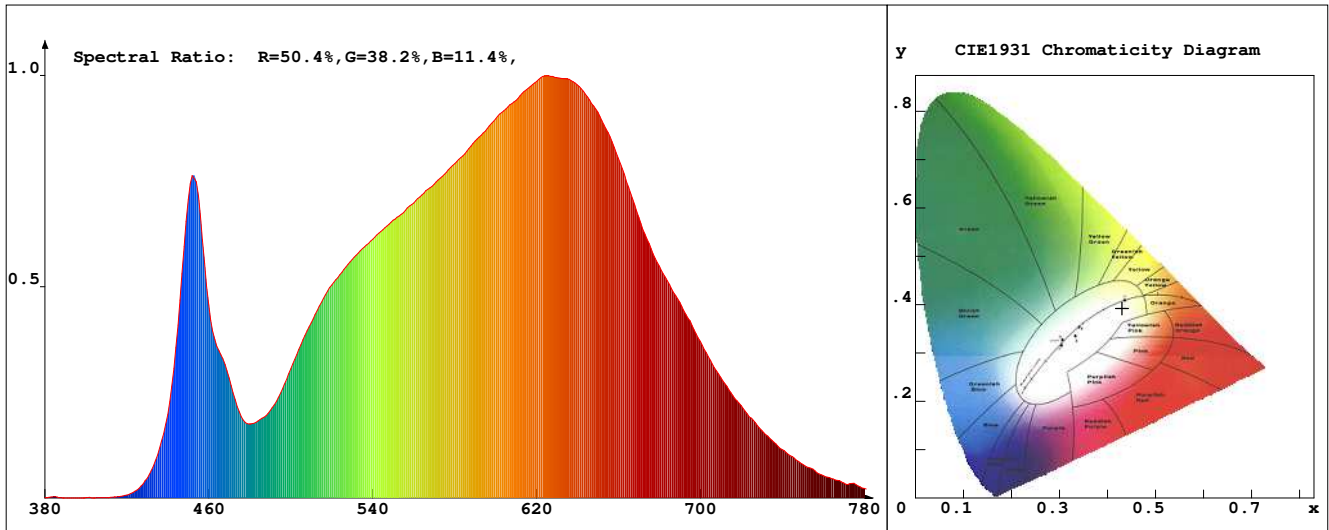


# LED Test Report

**Product Mark**

Product Type : OR300NT021828Z2-5F3  
 Temperature : 'C  
 Operator : -  
 Remark:

Manufacturer : -  
 Humidity : -%  
 Test Date : 2024-02-13



**Chroma Parameters**

Chro.Coor.:x=0.4301 y=0.3926 u=0.2511 v=0.3438 duv=-0.0037  
 CCT: 3023K Dominant Wave.:584.2nm Purity:46.9% Centre Wave:601.6nm  
 Flux RGB Ratio:R=23.4%,G=74.9%,B=1.8% Peak Wave:622.6nm Half Width:165.0nm

**Rendering Index:Ra= 91.8 CRI= 89.1**

R1 =92	R2 =94	R3 =93	R4 =93	R5 =93	R6 =93	R7 =92	R8 =84
R9 =67	R10=85	R11=92	R12=75	R13=92	R14=95	R15=91	
PPF:7.503umol/s (400-700nm)			PRF:1.5mW (400-700nm)			PAR:1.4mW (400-700nm)	

**Photo Parameters**

Flux:484.16lm Effi.:60.11m/W Radiant:1635.3mW Iv:0.0mcd  
 Scotopic Flux:682.5Plm Effi.:0.0Plm/W S/P:1.4  
 Efficiency:0.00 Effi Level:A++ (EU 874-2012) Photon Flux:8111.660umol/s (380-780nm)

**Ele. Parameters**

Forward Current:If=335.0mA Reverse Voltage:Vr=5.00V  
 Forward Voltage:Vf=24.04V Reverse Current:Ir=0.00uA  
 Power:P=8.070W

**Instrument state**

Instrument:Lisun Integral Time: 348.252ms VPeak: 14760  
 VDark: 1252 Scan Range: 380-780nm Product ID: 201508924

# IES TM-30-2015 Test Report

**Product Mark**

Product Type : OR300NT021828Z2-5F3

Temperature : 'C

Operator : -

Remark :

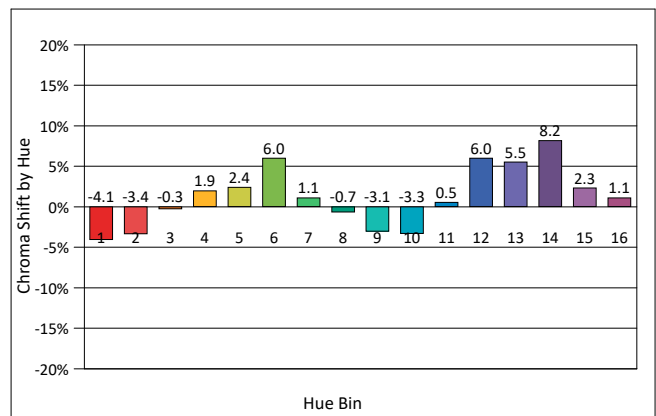
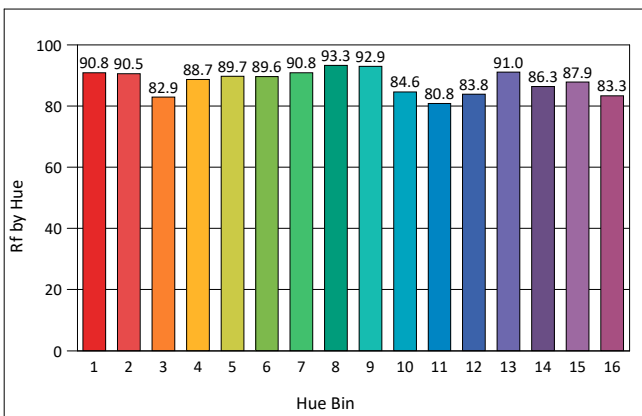
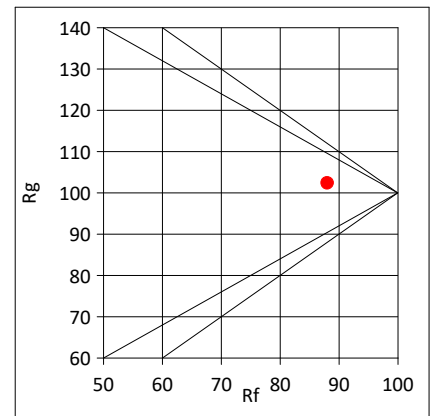
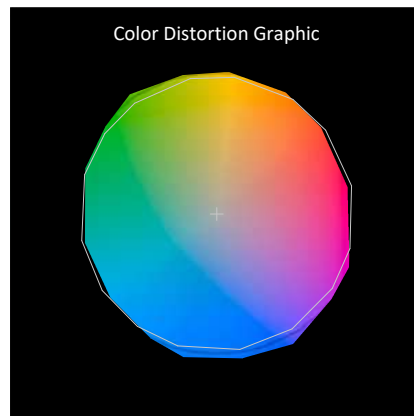
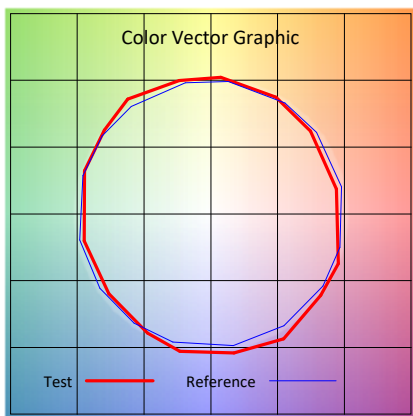
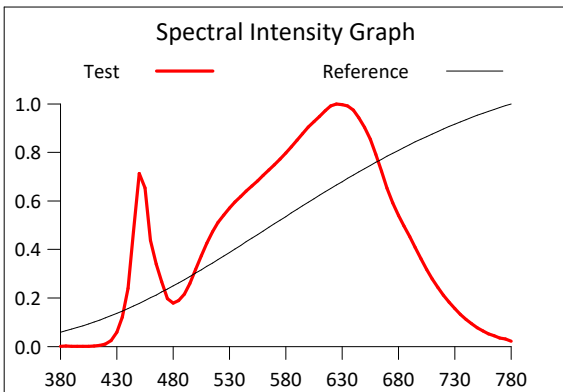
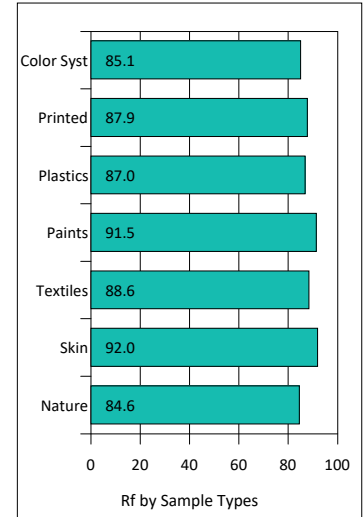
Manufacturer : -

Humidity : -%

Test Date : 2024-02-13

Rf: 88.0 CCT(K): 3023 u': 0.2511  
 Rg: 102.4 LER: 282.8 Duv: -0.0037 v': 0.3438

Hue Bin	Rf	Graphic Shifts (%)	
		Chroma	Hue
1	90.8	-4.1%	-0.9%
2	90.5	-3.4%	3.4%
3	82.9	-0.3%	7.9%
4	88.7	1.9%	5.9%
5	89.7	2.4%	4.2%
6	89.6	6.0%	-0.9%
7	90.8	1.1%	-4.5%
8	93.3	-0.7%	-3.8%
9	92.9	-3.1%	1.5%
10	84.6	-3.3%	7.2%
11	80.8	0.5%	12.7%
12	83.8	6.0%	6.5%
13	91.0	5.5%	-0.6%
14	86.3	8.2%	-5.7%
15	87.9	2.3%	-6.7%
16	83.3	1.1%	-12.2%



# IES TM-30-2015 Test Report

**Product Mark**

Product Type : OR300NT021828Z2-5F3

Manufacturer : -

Temperature : 'C

Humidity : -%

Operator : -

Test Date : 2024-02-13

Remark :

