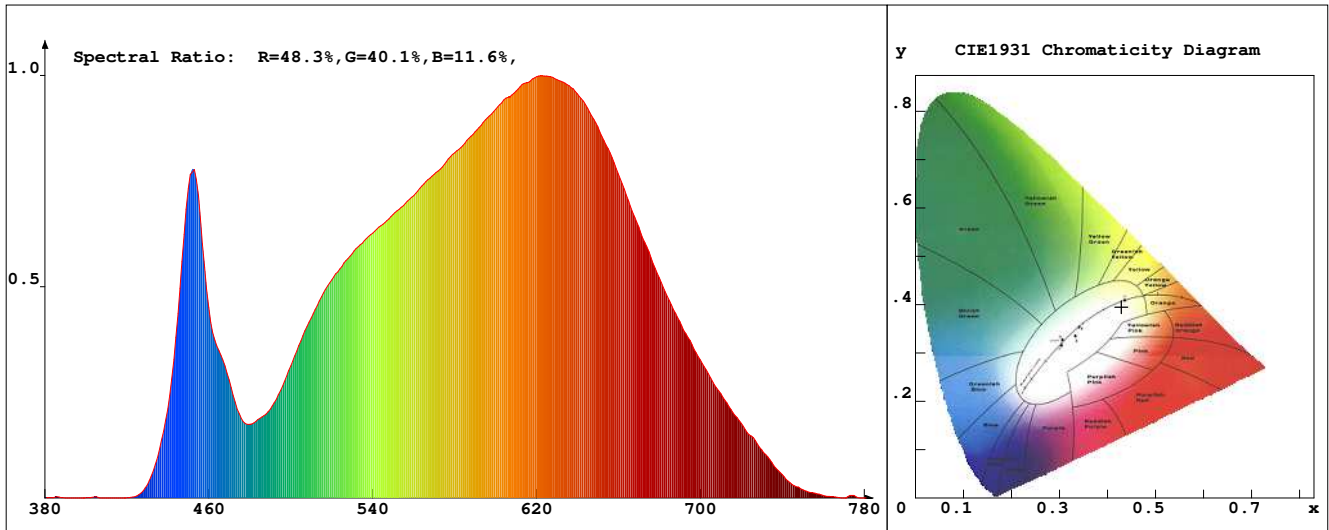


LED Test Report

Product Mark

Product Type : OR300NT011408Z2-5F3
 Temperature : 'C
 Operator : -
 Remark :

Manufacturer : -
 Humidity : -%
 Test Date : 2024-02-13



Chroma Parameters

Chro.Coor.:x=0.4287 y=0.3948 u=0.2493 v=0.3443 duv=-0.0026
 CCT: 3066K Dominant Wave.:583.5nm Purity:47.2% Centre Wave:598.8nm
 Flux RGB Ratio:R=23.0%,G=75.3%,B=1.7% Peak Wave:623.6nm Half Width:163.5nm

Rendering Index:Ra= 91.0 CRI= 88.1

R1 =92	R2 =94	R3 =94	R4 =91	R5 =90	R6 =91	R7 =92	R8 =83
R9 =61	R10=85	R11=90	R12=72	R13=93	R14=96	R15=90	
PPF:9.095umol/s (400-700nm)			PRF:1.9mW (400-700nm)			PAR:1.6mW (400-700nm)	

Photo Parameters

Flux:600.04lm Effi.:81.3lm/W Radiant:1946.9mW Iv:0.0mcd
 Scotopic Flux:845.3Plm Effi.:0.0Plm/W S/P:1.4
 Efficiency:0.00 Effi Level:A++ (EU 874-2012) Photon Flux:9586.640umol/s (380-780nm)

Ele. Parameters

Forward Current:If=307.0mA Reverse Voltage:Vr=5.00V
 Forward Voltage:Vf=24.04V Reverse Current:Ir=0.00uA
 Power:P=7.391W

Instrument state

Instrument:Lisun Integral Time: 232.769ms VPeak: 12072
 VDark: 1217 Scan Range: 380-780nm Product ID: 201508924

IES TM-30-2015 Test Report

Product Mark

Product Type : OR300NT011408Z2-5F3

Temperature : 'C

Operator : -

Remark :

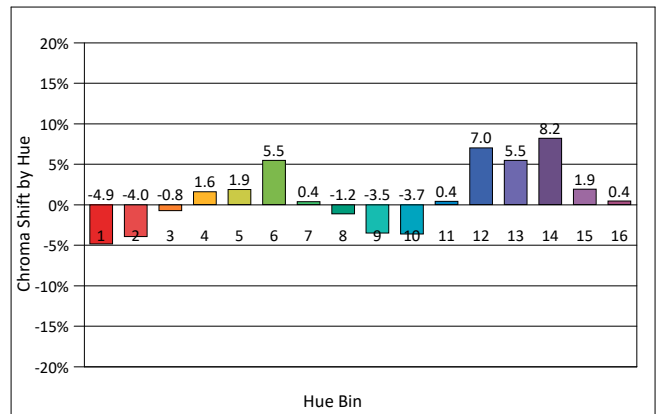
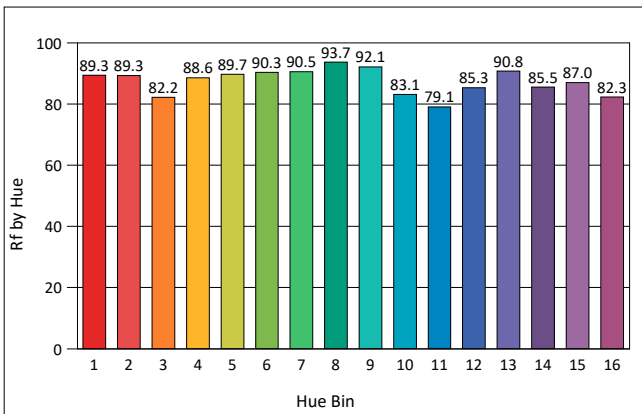
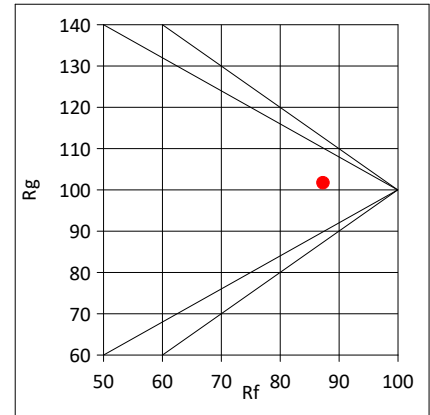
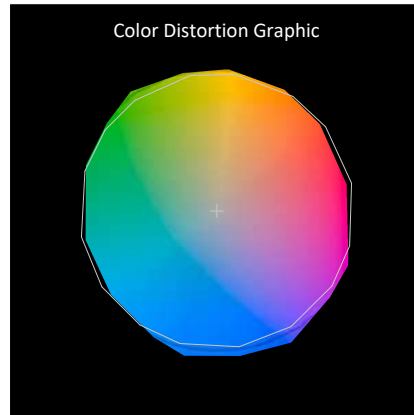
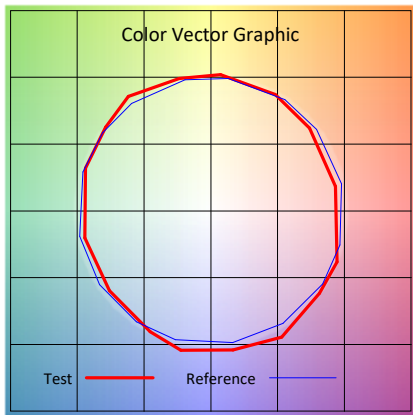
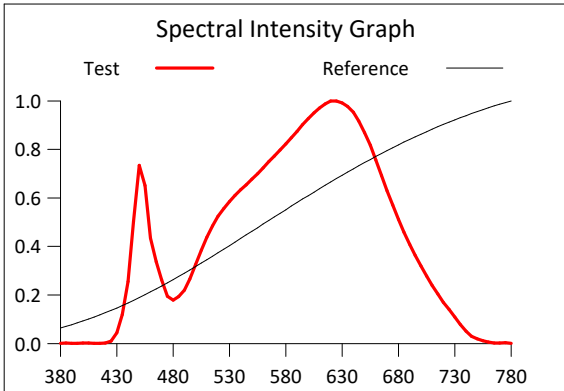
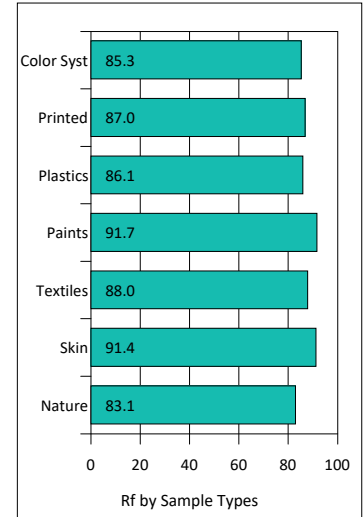
Manufacturer : -

Humidity : -%

Test Date : 2024-02-13

Rf: 87.3 CCT(K): 3066 u': 0.2493
 Rg: 101.7 LER: 294.7 Duv: -0.0026 v': 0.3443

Hue Bin	Rf	Graphic Shifts (%)	
		Chroma	Hue
1	89.3	-4.9%	-0.9%
2	89.3	-4.0%	3.7%
3	82.2	-0.8%	8.2%
4	88.6	1.6%	6.0%
5	89.7	1.9%	4.2%
6	90.3	5.5%	-0.9%
7	90.5	0.4%	-4.5%
8	93.7	-1.2%	-3.3%
9	92.1	-3.5%	2.0%
10	83.1	-3.7%	7.9%
11	79.1	0.4%	12.8%
12	85.3	7.0%	5.6%
13	90.8	5.5%	-0.9%
14	85.5	8.2%	-6.5%
15	87.0	1.9%	-7.3%
16	82.3	0.4%	-12.9%



IES TM-30-2015 Test Report

Product Mark

Product Type : OR300NT011408Z2-5F3

Manufacturer : -

Temperature : 'C

Humidity : -%

Operator : -

Test Date : 2024-02-13

Remark :

