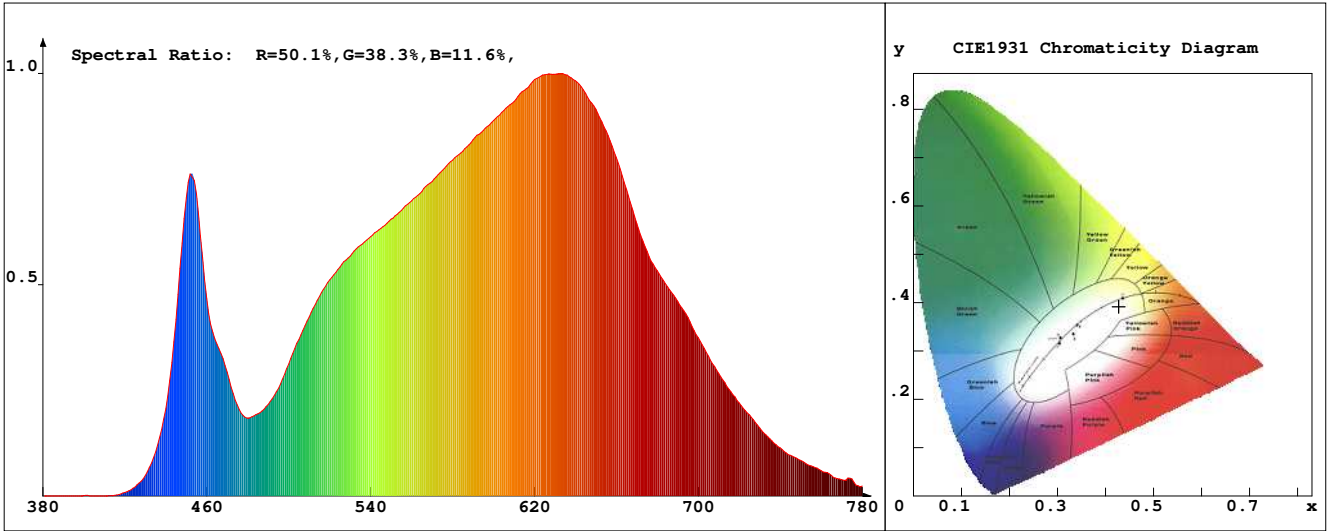


LED Test Report

Product Mark

Product Type : OR300NS031808Z2-5F3
 Temperature : 'C
 Operator : -
 Remark :

Manufacturer : -
 Humidity : -%
 Test Date : 2024-02-13



Chroma Parameters

Chro.Coor.:x=0.4278 y=0.3917 u=0.2500 v=0.3433 duv=-0.0037
 CCT: 3058K Dominant Wave.:584.1nm Purity:46.0% Centre Wave:600.4nm
 Flux RGB Ratio:R=23.2%,G=74.9%,B=1.8% Peak Wave:625.5nm Half Width:165.0nm

Rendering Index:Ra= 92.5 CRI= 90.0

R1 =93	R2 =95	R3 =94	R4 =93	R5 =93	R6 =93	R7 =93	R8 =86
R9 =70	R10=87	R11=92	R12=76	R13=94	R14=96	R15=92	
PPF:3.395umol/s (400-700nm)			PRF:0.7mW (400-700nm)			PAR:0.6mW (400-700nm)	

Photo Parameters

Flux:221.08lm Effi.:30.0lm/W Radiant:741.5mW Iv:0.0mcd
 Scotopic Flux:315.5Plm Effi.:0.0Plm/W S/P:1.4
 Efficiency:0.00 Effi Level:A++ (EU 874-2012) Photon Flux:3675.600umol/s (380-780nm)

Ele. Parameters

Forward Current:If=307.0mA Reverse Voltage:Vr=5.00V
 Forward Voltage:Vf=24.02V Reverse Current:Ir=0.00uA
 Power:P=7.391W

Instrument state

Instrument:Lisun Integral Time: 690.178ms VPeak: 13400
 VDark: 1199 Scan Range: 380-780nm Product ID: 201508924

IES TM-30-2015 Test Report

Product Mark

Product Type : OR300NS031808Z2-5F3

Temperature : 'C

Operator : -

Remark :

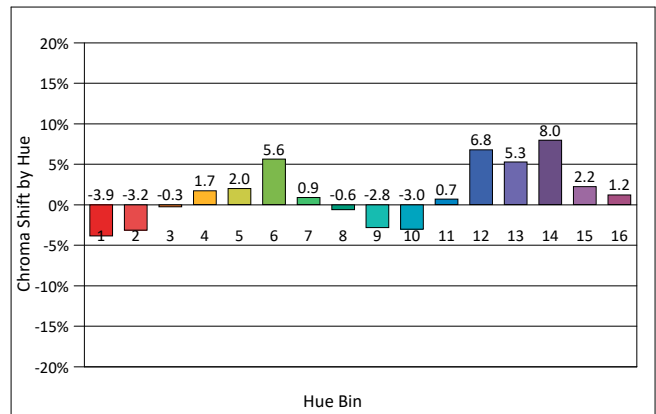
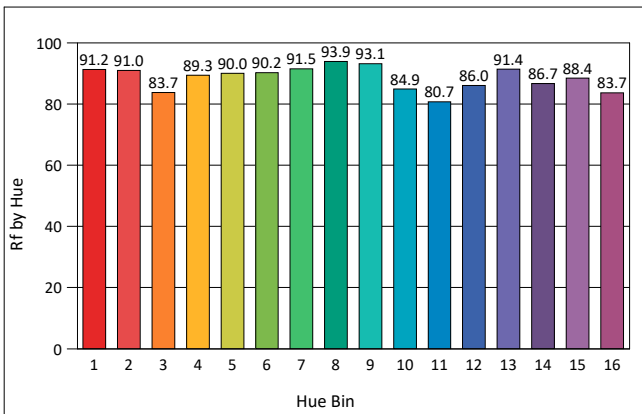
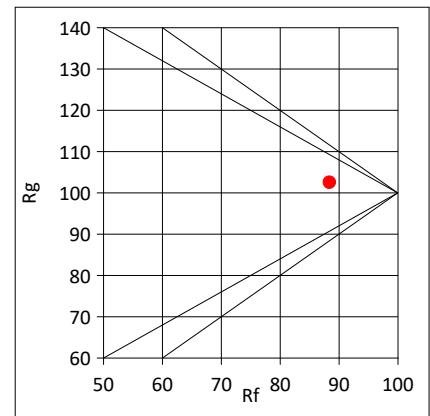
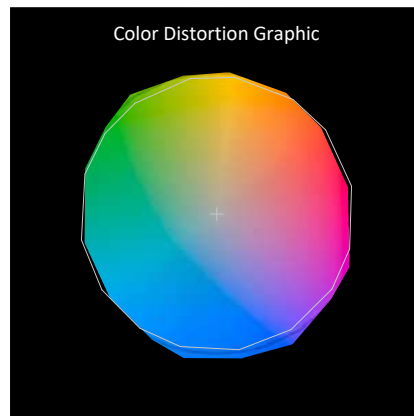
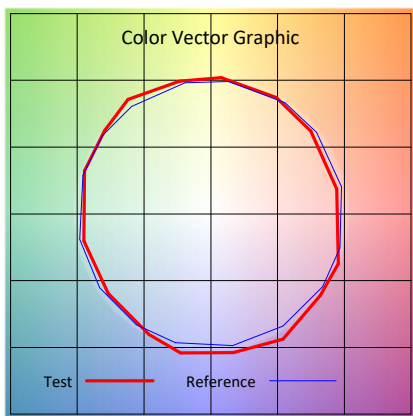
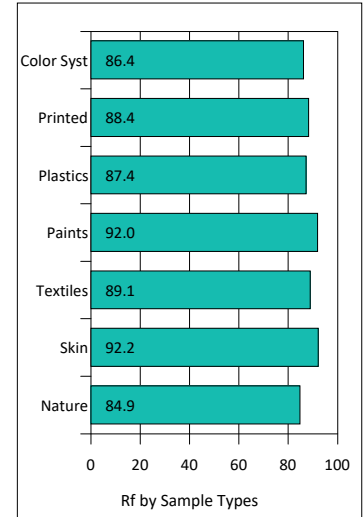
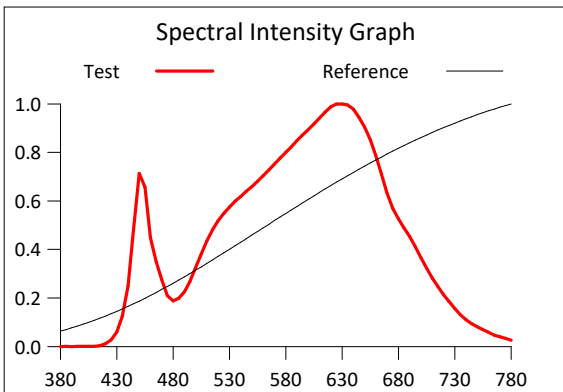
Manufacturer : -

Humidity : -%

Test Date : 2024-02-13

Rf: 88.4 CCT(K): 3058 u': 0.2500
 Rg: 102.5 LER: 282.5 Duv: -0.0037 v': 0.3433

Hue Bin	Rf	Graphic Shifts (%)	
		Chroma	Hue
1	91.2	-3.9%	-0.8%
2	91.0	-3.2%	3.3%
3	83.7	-0.3%	7.5%
4	89.3	1.7%	5.5%
5	90.0	2.0%	4.0%
6	90.2	5.6%	-0.8%
7	91.5	0.9%	-4.0%
8	93.9	-0.6%	-3.4%
9	93.1	-2.8%	1.7%
10	84.9	-3.0%	7.1%
11	80.7	0.7%	11.8%
12	86.0	6.8%	5.3%
13	91.4	5.3%	-0.6%
14	86.7	8.0%	-5.5%
15	88.4	2.2%	-6.4%
16	83.7	1.2%	-11.9%



IES TM-30-2015 Test Report

Product Mark

Product Type : OR300NS031808Z2-5F3

Manufacturer : -

Temperature : 'C

Humidity : -%

Operator : -

Test Date : 2024-02-13

Remark :

