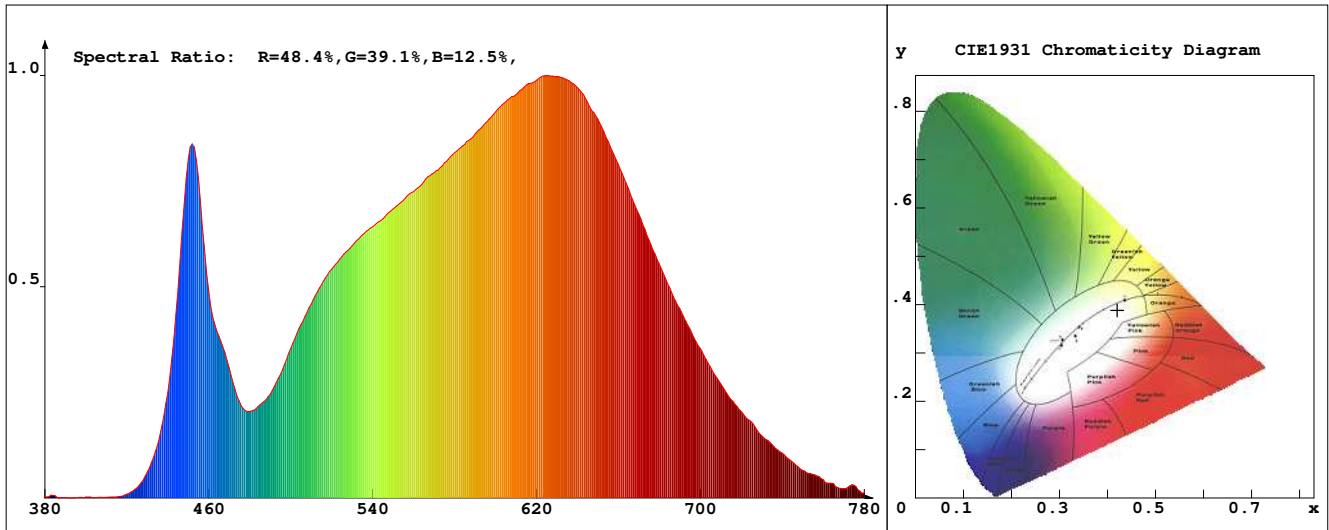


LED Test Report

Product Mark

Product Type : OR300N04021808Z2-5F3
 Temperature : 'C
 Operator : -
 Remark:

Manufacturer : -
 Humidity : -%
 Test Date : 2024-02-13



Chroma Parameters

Chro.Coor.:x=0.4201 y=0.3884 u=0.2464 v=0.3417 duv=-0.0039
 CCT: 3173K Dominant Wave.:583.7nm Purity:42.7% Centre Wave:598.6nm
 Flux RGB Ratio:R=22.6%,G=75.4%,B=1.9% Peak Wave:623.6nm Half Width:169.6nm

Rendering Index:Ra= 92.8 CRI= 90.3

R1 =94	R2 =95	R3 =95	R4 =93	R5 =93	R6 =93	R7 =93	R8 =87
R9 =69	R10=88	R11=92	R12=76	R13=94	R14=96	R15=92	
PPF:2.030umol/s (400-700nm)			PRF:0.4mW (400-700nm)			PAR:0.4mW (400-700nm)	

Photo Parameters

Flux:132.32lm Effi.:17.8lm/W Radiant:441.7mW Iv:0.0mcd
 Scotopic Flux:195.5Plm Effi.:0.0Plm/W S/P:1.5
 Efficiency:0.00 Effi Level:A++ (EU 874-2012) Photon Flux:2175.940umol/s (380-780nm)

Ele. Parameters

Forward Current:If=309.0mA Reverse Voltage:Vr=5.00V
 Forward Voltage:Vf=24.03V Reverse Current:Ir=0.00uA
 Power:P=7.441W

Instrument state

Instrument:Lisun Integral Time: 1000.000ms VPeak: 11560
 VDark: 1349 Scan Range: 380-780nm Product ID: 201508924

IES TM-30-2015 Test Report

Product Mark

Product Type : OR300N04021808Z2-5F3

Temperature : 'C

Operator : -

Remark :

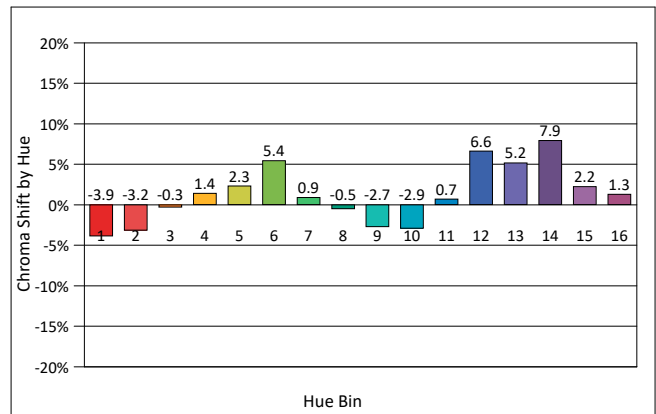
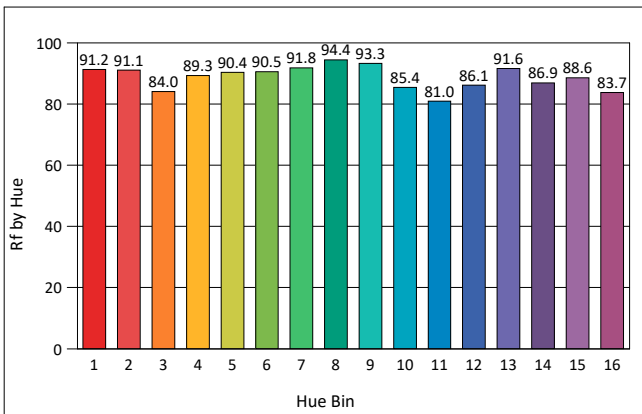
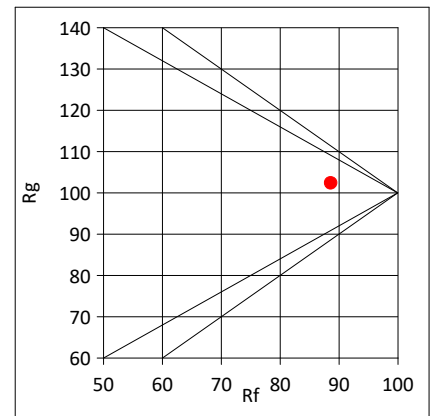
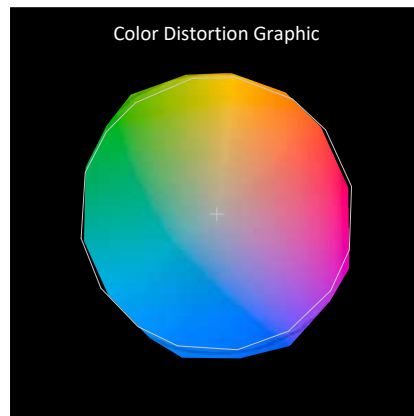
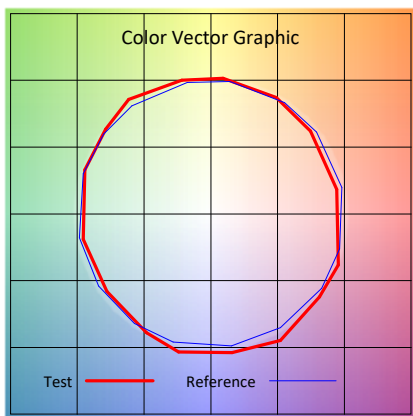
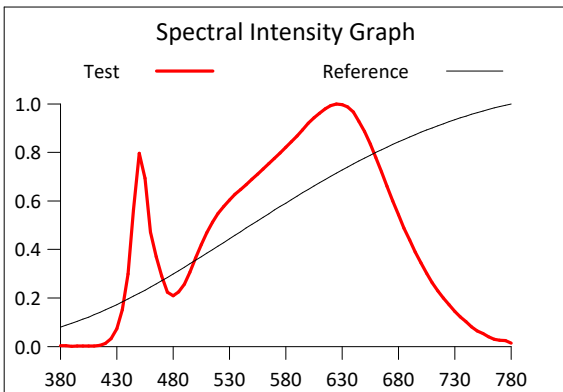
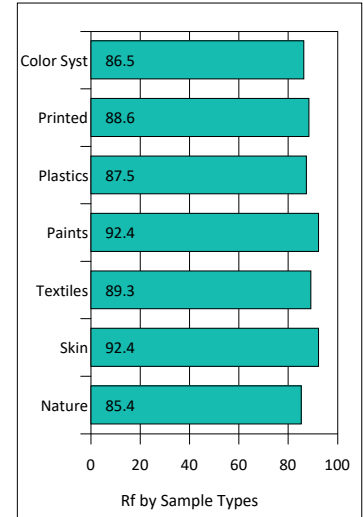
Manufacturer : -

Humidity : -%

Test Date : 2024-02-13

Rf: 88.6 CCT(K): 3173 u': 0.2464
 Rg: 102.4 LER: 285.4 Duv: -0.0039 v': 0.3417

Hue Bin	Rf	Graphic Shifts (%)	
		Chroma	Hue
1	91.2	-3.9%	-0.9%
2	91.1	-3.2%	3.2%
3	84.0	-0.3%	7.4%
4	89.3	1.4%	5.5%
5	90.4	2.3%	3.7%
6	90.5	5.4%	-0.6%
7	91.8	0.9%	-3.8%
8	94.4	-0.5%	-3.1%
9	93.3	-2.7%	1.7%
10	85.4	-2.9%	6.9%
11	81.0	0.7%	11.6%
12	86.1	6.6%	5.4%
13	91.6	5.2%	-0.4%
14	86.9	7.9%	-5.3%
15	88.6	2.2%	-6.3%
16	83.7	1.3%	-12.0%



IES TM-30-2015 Test Report

Product Mark

Product Type : OR300N04021808Z2-5F3

Manufacturer : -

Temperature : 'C

Humidity : -%

Operator : -

Test Date : 2024-02-13

Remark :

