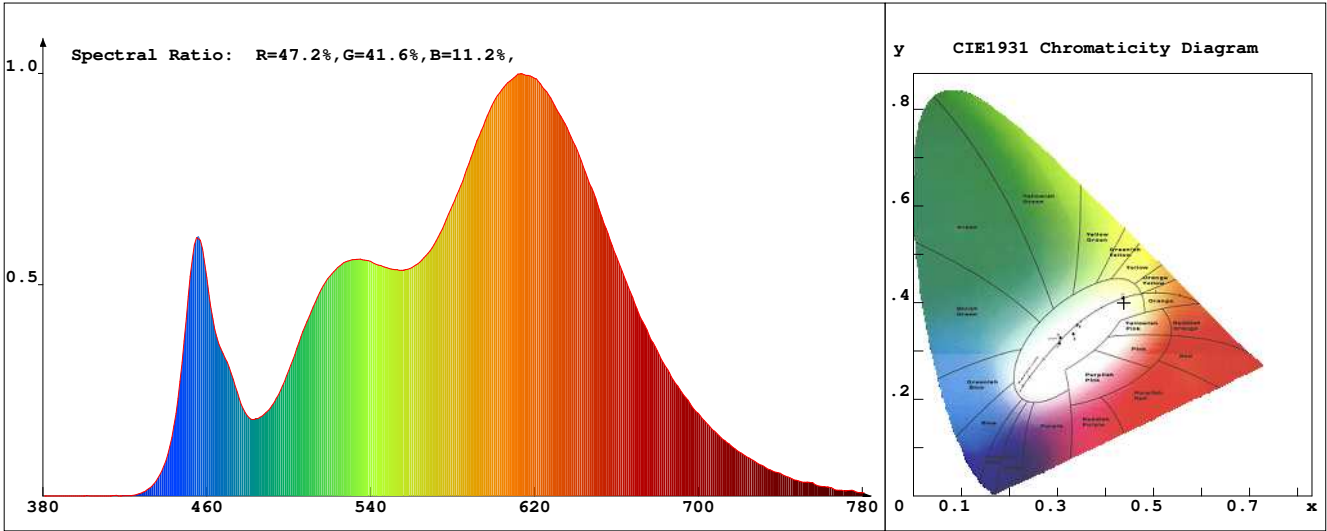


LED Test Report

Product Mark

Product Type : OR300J521208Z2
 Temperature : 'C
 Operator : -
 Remark:

Manufacturer : -
 Humidity : -%
 Test Date : 2023-12-22



Chroma Parameters

Chro.Coor.:x=0.4382 y=0.3998 u=0.2533 v=0.3466 duv=-0.0019
 CCT: 2943K Dominant Wave.:583.7nm Purity:51.6% Centre Wave:590.2nm
 Flux RGB Ratio:R=24.6%,G=73.5%,B=1.9% Peak Wave:613.6nm Half Width:147.9nm

Rendering Index:Ra= 93.7 CRI= 91.6

R1 =97 R2 =99 R3 =98 R4 =98 R5 =97 R6 =94 R7 =89 R8 =78
 R9 =52 R10=98 R11=96 R12=80 R13=99 R14=99 R15=89
 PPF:12.702umol/s (400-700nm) PRF:2.6mW (400-700nm) PAR:2.3mW (400-700nm)

Photo Parameters

Flux:888.57lm Effi.:93.4lm/W Radiant:2708.5mW Iv:0.0mcd
 Scotopic Flux:1275.5Plm Effi.:0.0Plm/W S/P:1.4
 Efficiency:0.00 Effi Level:A++ (EU 874-2012) Photon Flux:13275.000umol/s (380-780nm)

Ele. Parameters

Forward Current:If=396.0mA Reverse Voltage:Vr=5.00V
 Forward Voltage:Vf=24.03V Reverse Current:Ir=0.00uA
 Power:P=9.520W

Instrument state

Instrument:Lisun Integral Time: 178.615ms VPeak: 13368
 VDark: 1255 Scan Range: 380-780nm Product ID: 201508924

IES TM-30-2015 Test Report

Product Mark

Product Type : OR300J521208Z2

Temperature : 'C

Operator : -

Remark :

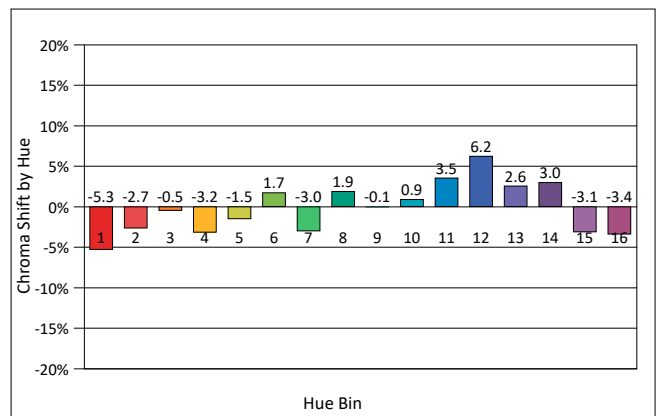
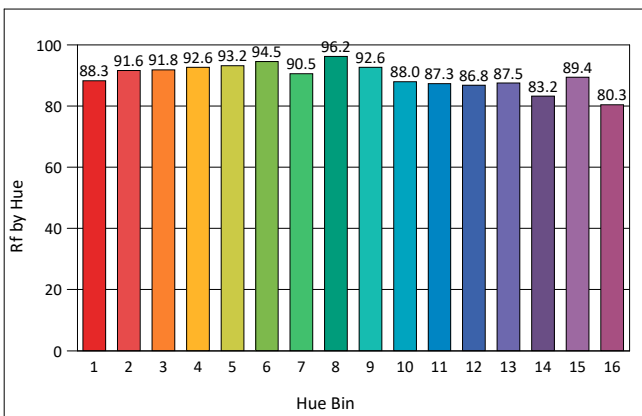
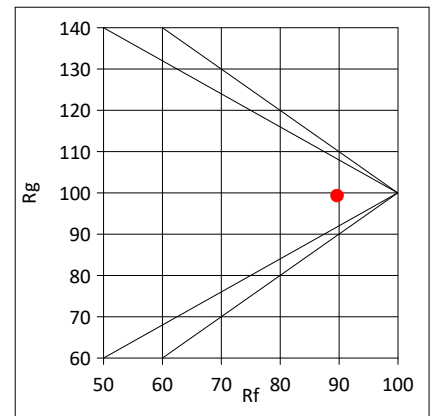
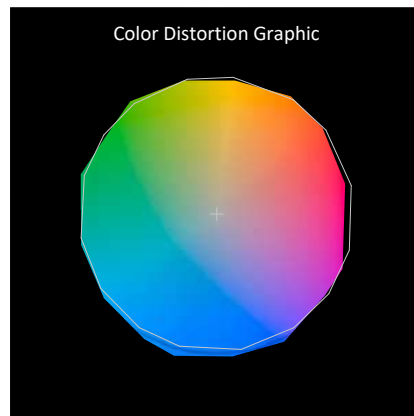
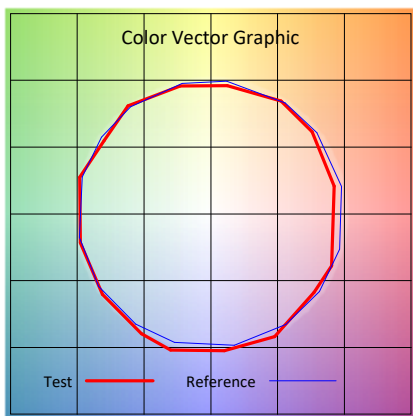
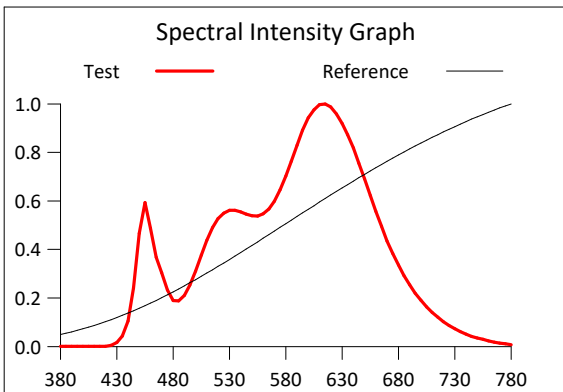
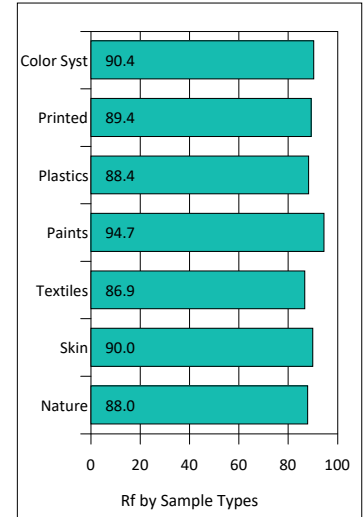
Manufacturer : -

Humidity : -%

Test Date : 2023-12-22

Rf: 89.7 CCT(K): 2943 u': 0.2533
 Rg: 99.3 LER: 307.5 Duv: -0.0019 v': 0.3466

Hue Bin	Rf	Graphic Shifts (%)	
		Chroma	Hue
1	88.3	-5.3%	1.2%
2	91.6	-2.7%	2.6%
3	91.8	-0.5%	3.4%
4	92.6	-3.2%	-0.9%
5	93.2	-1.5%	2.0%
6	94.5	1.7%	1.2%
7	90.5	-3.0%	1.1%
8	96.2	1.9%	0.5%
9	92.6	-0.1%	4.2%
10	88.0	0.9%	6.8%
11	87.3	3.5%	7.5%
12	86.8	6.2%	-1.6%
13	87.5	2.6%	-8.1%
14	83.2	3.0%	-12.0%
15	89.4	-3.1%	-3.0%
16	80.3	-3.4%	-13.5%



IES TM-30-2015 Test Report

Product Mark

Product Type : OR300J521208Z2

Manufacturer : -

Temperature : 'C

Humidity : -%

Operator : -

Test Date : 2023-12-22

Remark :

