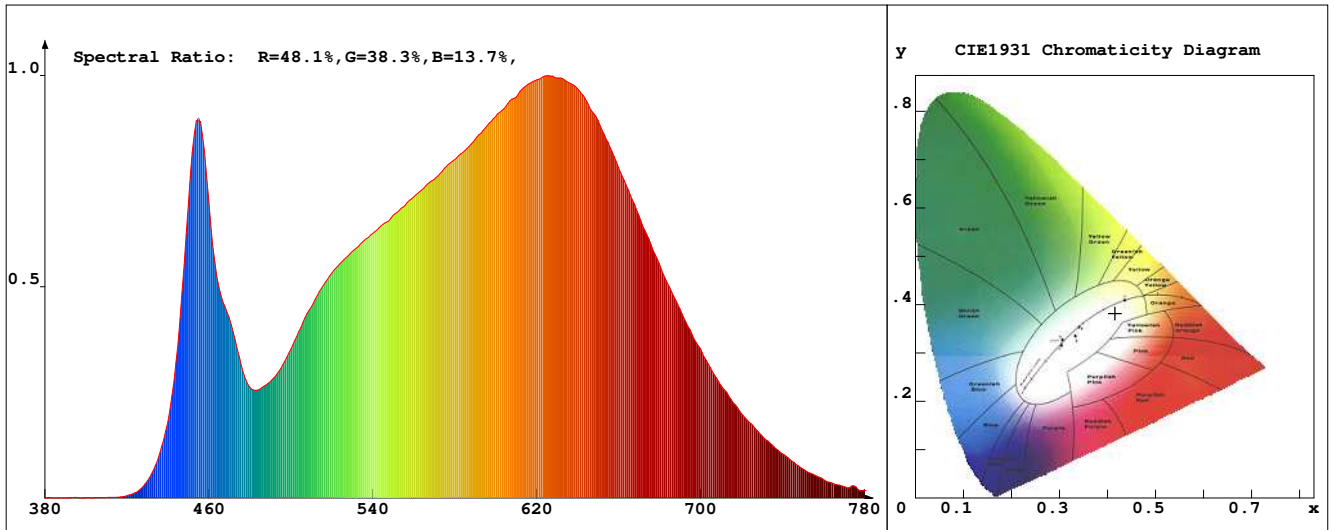


# LED Test Report

**Product Mark**

Product Type : OR300I521208Z2  
 Temperature : 'C  
 Operator : -  
 Remark :

Manufacturer : -  
 Humidity : -%  
 Test Date : 2023-12-22



**Chroma Parameters**

Chro.Coor.:x=0.4157 y=0.3817 u=0.2464 v=0.3394 duv=-0.0060  
 CCT: 3203K Dominant Wave.:584.7nm Purity:39.3% Centre Wave:599.3nm  
 Flux RGB Ratio:R=22.8%,G=74.8%,B=2.3% Peak Wave:623.6nm Half Width:168.4nm

**Rendering Index:Ra= 93.9 CRI= 91.9**

R1 =95	R2 =97	R3 =96	R4 =95	R5 =96	R6 =94	R7 =91	R8 =86
R9 =74	R10=92	R11=94	R12=77	R13=96	R14=97	R15=94	
PPF:11.976umol/s (400-700nm)			PRF:2.5mW (400-700nm)			PAR:2.2mW (400-700nm)	

**Photo Parameters**

Flux:758.16lm      Effi.:81.4lm/W      Radiant:2610.1mW      Iv:0.0mcd  
 Scotopic Flux:1167.6Plm      Effi.:0.0Plm/W      S/P:1.5  
 Efficiency:0.00      Effi Level:A++ (EU 874-2012)      Photon Flux:12836.200umol/s (380-780nm)

**Ele. Parameters**

Forward Current:If=388.0mA      Reverse Voltage:Vr=5.00V  
 Forward Voltage:Vf=24.00V      Reverse Current:Ir=0.00uA  
 Power:P=9.330W

**Instrument state**

Instrument:Lisun      Integral Time: 196.408ms      VPeak: 12840  
 VDark: 1143      Scan Range: 380-780nm      Product ID: 201508924

# IES TM-30-2015 Test Report

## Product Mark

Product Type : OR300I521208Z2

Temperature : 'C

Operator : -

Remark :

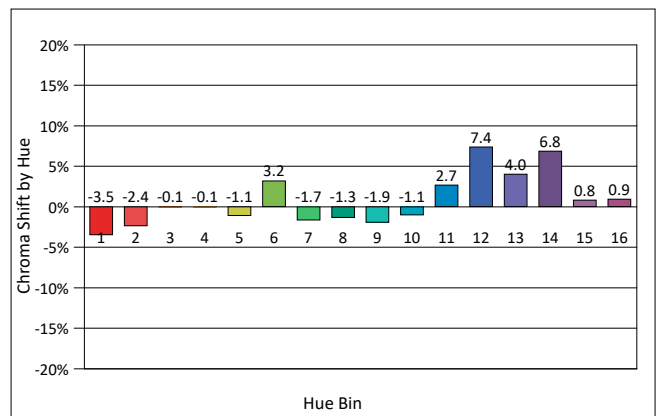
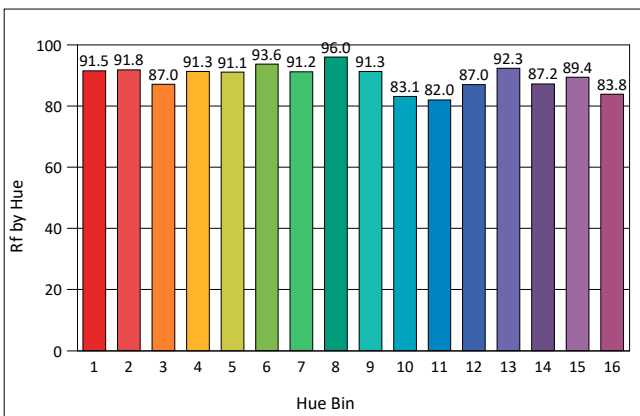
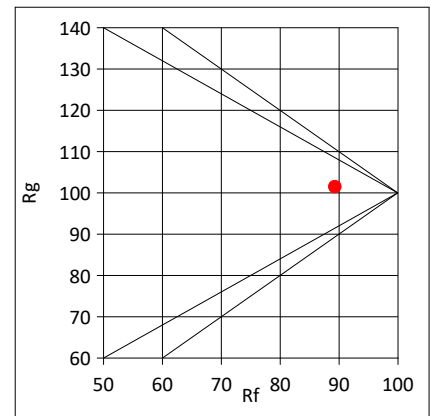
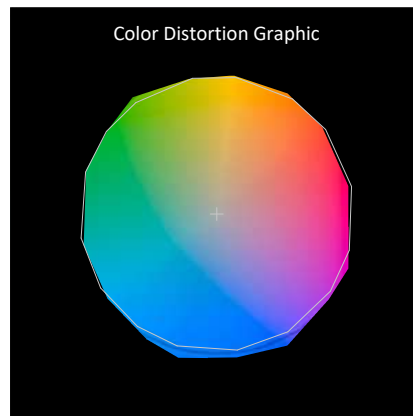
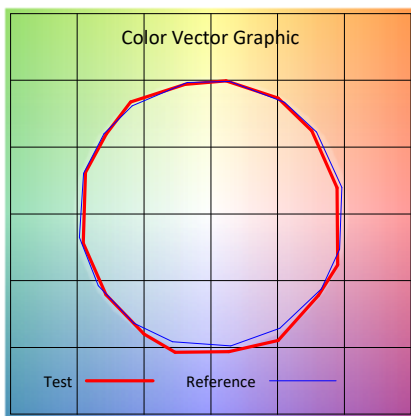
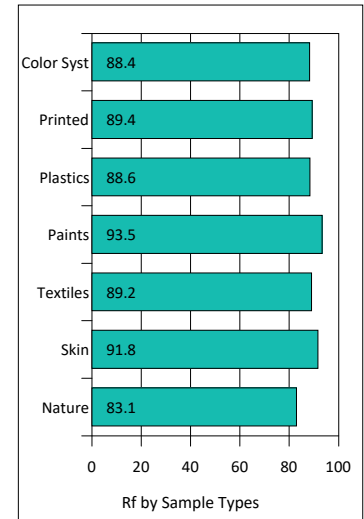
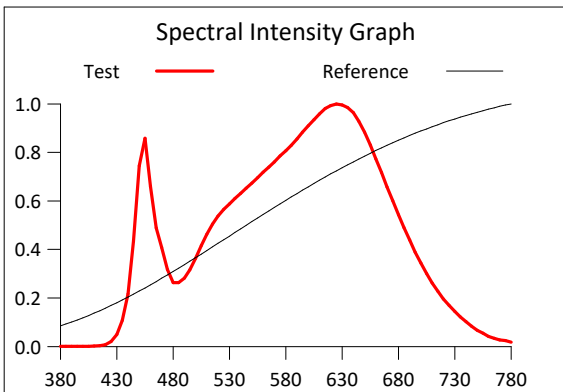
Manufacturer : -

Humidity : -%

Test Date : 2023-12-22

Rf: 89.3 CCT(K): 3203 u': 0.2464  
 Rg: 101.4 LER: 281.0 Duv: -0.0060 v': 0.3394

Hue Bin	Rf	Graphic Shifts (%)	
		Chroma	Hue
1	91.5	-3.5%	0.5%
2	91.8	-2.4%	2.8%
3	87.0	-0.1%	5.8%
4	91.3	-0.1%	3.0%
5	91.1	-1.1%	2.0%
6	93.6	3.2%	-0.6%
7	91.2	-1.7%	-0.9%
8	96.0	-1.3%	-1.0%
9	91.3	-1.9%	4.8%
10	83.1	-1.1%	8.9%
11	82.0	2.7%	11.0%
12	87.0	7.4%	3.4%
13	92.3	4.0%	-2.4%
14	87.2	6.8%	-6.2%
15	89.4	0.8%	-5.3%
16	83.8	0.9%	-11.9%



# IES TM-30-2015 Test Report

**Product Mark**

Product Type : OR300I521208Z2

Manufacturer : -

Temperature : 'C

Humidity : -%

Operator : -

Test Date : 2023-12-22

Remark :

