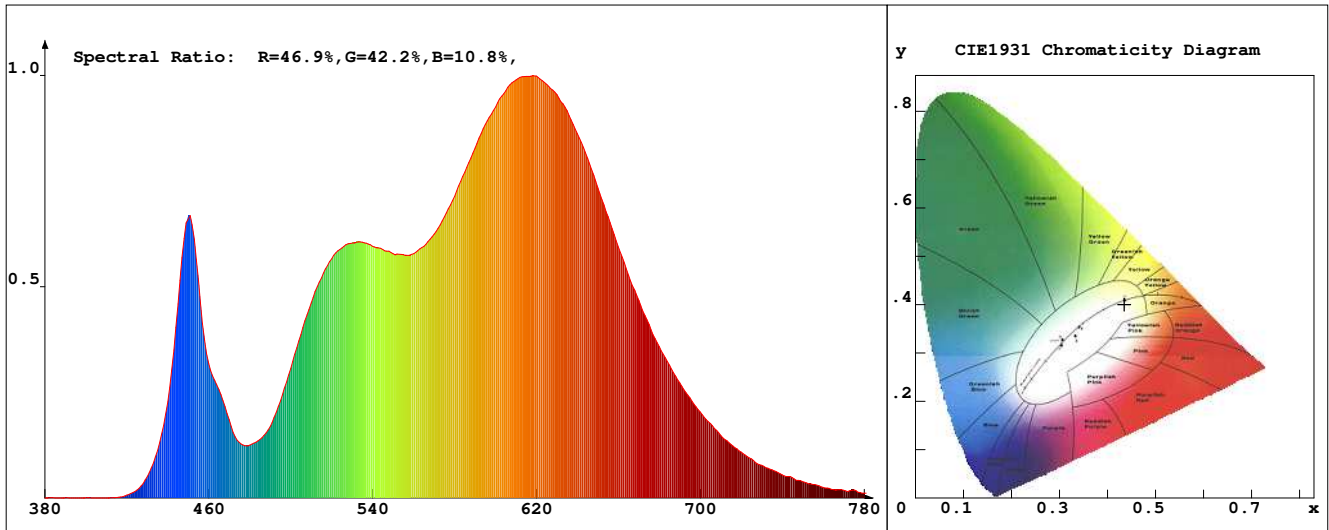


LED Test Report

Product Mark

Product Type : OR300F52400OM1-W5
 Temperature : 'C
 Operator : -
 Remark :

Manufacturer : -
 Humidity : -%
 Test Date : 2024-02-15



Chroma Parameters

Chro.Coor.:x=0.4351 y=0.4006 u=0.2509 v=0.3465 duv=-0.0011
 CCT: 3002K Dominant Wave.:583.2nm Purity:50.9% Centre Wave:588.9nm
 Flux RGB Ratio:R=24.0%,G=74.6%,B=1.4% Peak Wave:618.5nm Half Width:153.4nm

Rendering Index:Ra= 92.6 CRI= 89.6

R1 =95	R2 =95	R3 =95	R4 =95	R5 =97	R6 =96	R7 =90	R8 =80
R9 =53	R10=88	R11=92	R12=82	R13=95	R14=96	R15=88	
PPF:10.214umol/s (400-700nm)			PRF:2.1mW (400-700nm)			PAR:1.9mW (400-700nm)	

Photo Parameters

Flux:655.15lm Effi.:91.3lm/W Radiant:2181.7mW Iv:0.0mcd
 Scotopic Flux:921.8Plm Effi.:0.0Plm/W S/P:1.4
 Efficiency:0.00 Effi Level:A++ (EU 874-2012) Photon Flux:10685.000umol/s (380-780nm)

Ele. Parameters

Forward Current:If=596.0mA Reverse Voltage:Vr=5.00V
 Forward Voltage:Vf=12.04V Reverse Current:Ir=0.00uA
 Power:P=7.191W

Instrument state

Instrument:Lisun Integral Time: 225.014ms VPeak: 13384
 VDark: 1245 Scan Range: 380-780nm Product ID: 201508924

IES TM-30-2015 Test Report

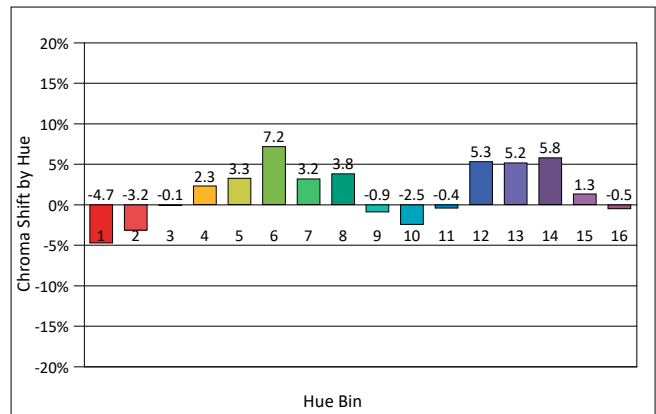
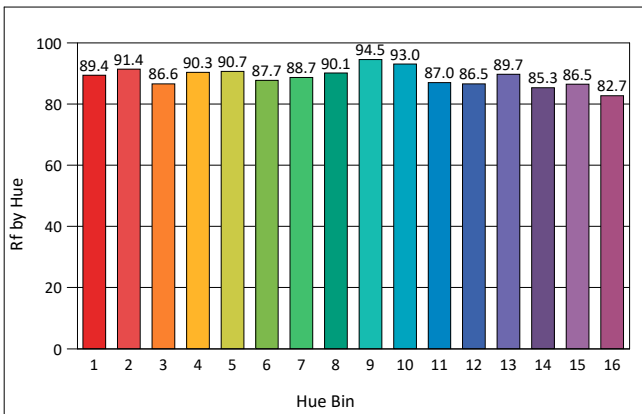
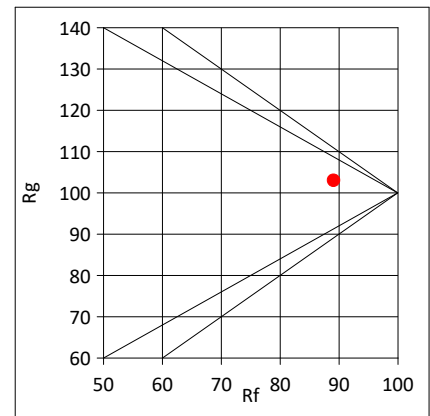
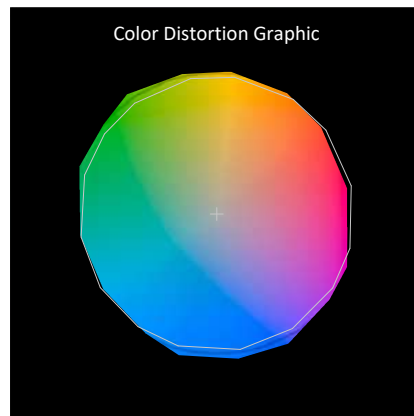
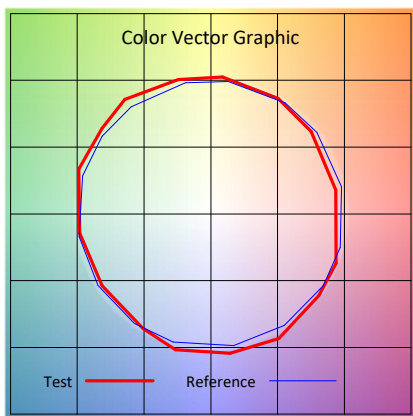
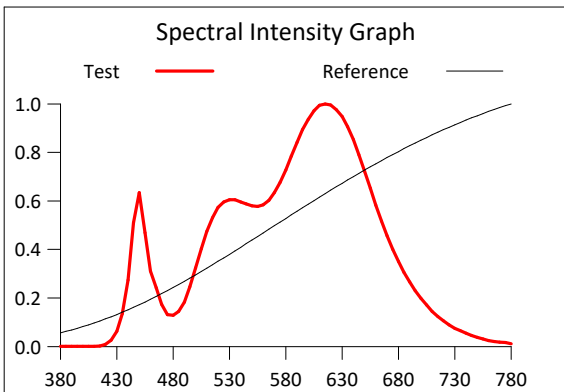
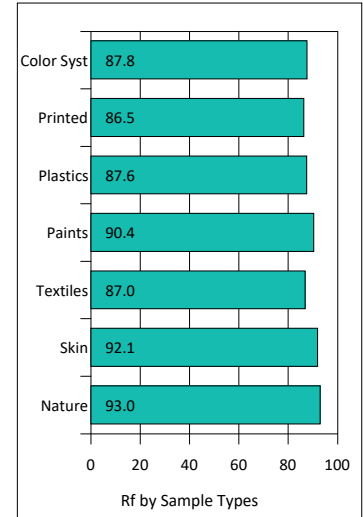
Product Mark

Product Type : OR300F52400OM1-W5
 Temperature : 'C
 Operator : -
 Remark :

Manufacturer : -
 Humidity : -%
 Test Date : 2024-02-15

Rf: 89.1 CCT(K): 3002 u': 0.2509
 Rg: 103.0 LER: 308.9 Duv: -0.0011 v': 0.3465

Hue Bin	Rf	Graphic Shifts (%)	
		Chroma	Hue
1	89.4	-4.7%	-1.6%
2	91.4	-3.2%	3.0%
3	86.6	-0.1%	6.2%
4	90.3	2.3%	4.8%
5	90.7	3.3%	4.6%
6	87.7	7.2%	0.8%
7	88.7	3.2%	-5.1%
8	90.1	3.8%	-4.3%
9	94.5	-0.9%	-2.2%
10	93.0	-2.5%	1.9%
11	87.0	-0.4%	7.6%
12	86.5	5.3%	2.7%
13	89.7	5.2%	-3.6%
14	85.3	5.8%	-8.9%
15	86.5	1.3%	-7.9%
16	82.7	-0.5%	-12.4%



IES TM-30-2015 Test Report

Product Mark

Product Type : OR300F52400OM1-W5

Manufacturer : -

Temperature : 'C

Humidity : -%

Operator : -

Test Date : 2024-02-15

Remark :

