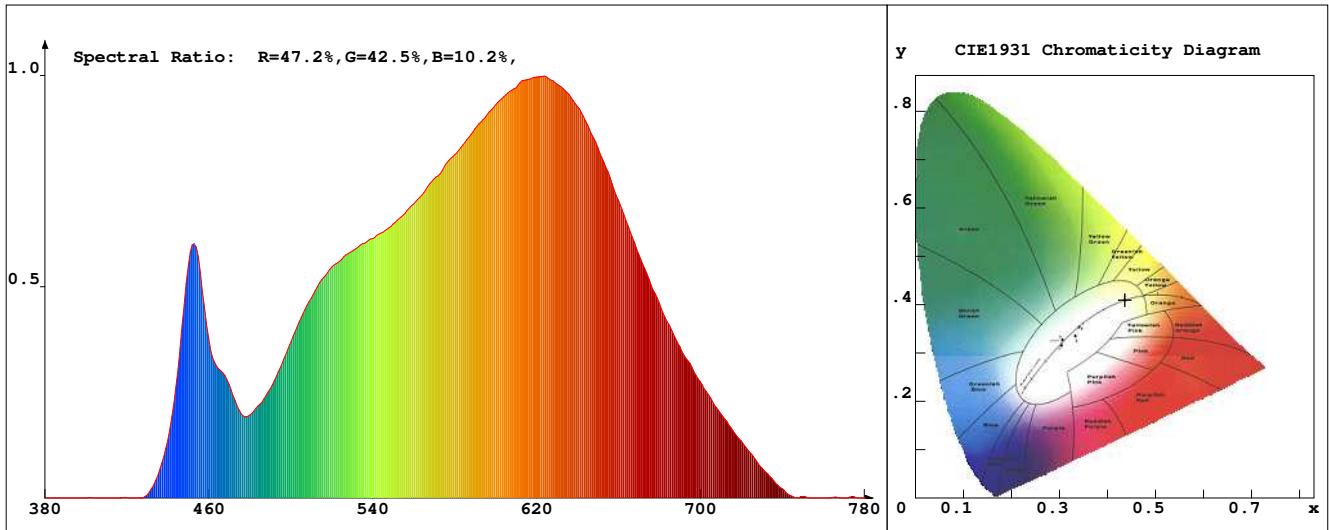


LED Test Report

Product Mark

Product Type : OR300F52324OS1
 Temperature : 'C
 Operator : -
 Remark:

Manufacturer : -
 Humidity : -%
 Test Date : 2024-02-15



Chroma Parameters

Chro.Coor.:x=0.4364 y=0.4099 u=0.2477 v=0.3491 duv=0.0024
 CCT: 3056K Dominant Wave.:581.8nm Purity:54.0% Centre Wave:593.7nm
 Flux RGB Ratio:R=22.8%,G=75.5%,B=1.7% Peak Wave:622.6nm Half Width:162.9nm

Rendering Index:Ra= 91.7 CRI= 88.6

R1 =91	R2 =95	R3 =97	R4 =93	R5 =91	R6 =94	R7 =93	R8 =81
R9 =54	R10=87	R11=94	R12=75	R13=92	R14=98	R15=87	
PPF:3.998umol/s (400-700nm)			PRF:0.8mW (400-700nm)			PAR:0.7mW (400-700nm)	

Photo Parameters

Flux:273.07lm Effi.:67.5lm/W Radiant:846.1mW Iv:0.0mcd
 Scotopic Flux:385.9Plm Effi.:0.0Plm/W S/P:1.4
 Efficiency:0.00 Effi Level:A++ (EU 874-2012) Photon Flux:4156.980umol/s (380-780nm)

Ele. Parameters

Forward Current:If=336.0mA Reverse Voltage:Vr=5.00V
 Forward Voltage:Vf=12.04V Reverse Current:Ir=0.00uA
 Power:P=4.040W

Instrument state

Instrument:Lisun Integral Time: 414.975ms VPeak: 9848
 VDark: 1219 Scan Range: 380-780nm Product ID: 201508924

IES TM-30-2015 Test Report

Product Mark

Product Type : OR300F523240S1

Temperature : 'C

Operator : -

Remark :

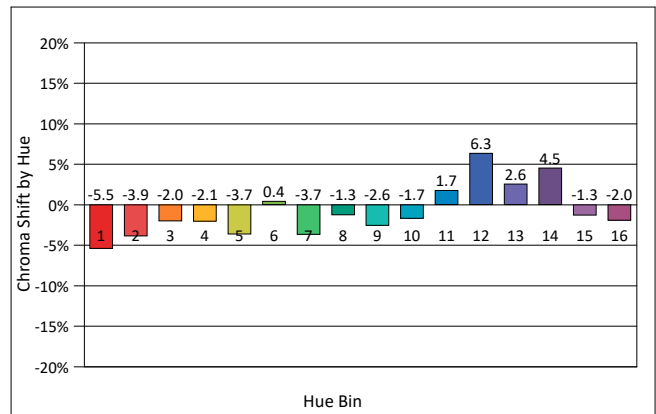
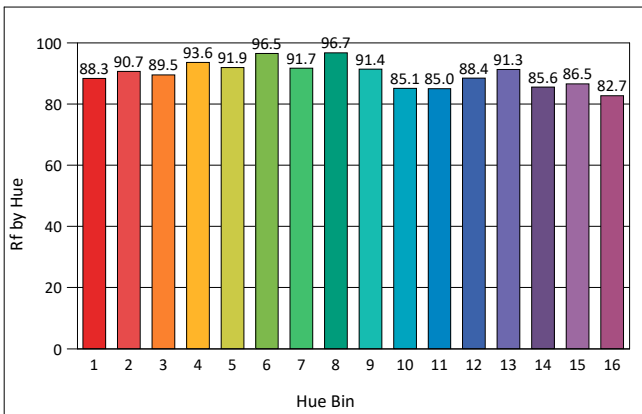
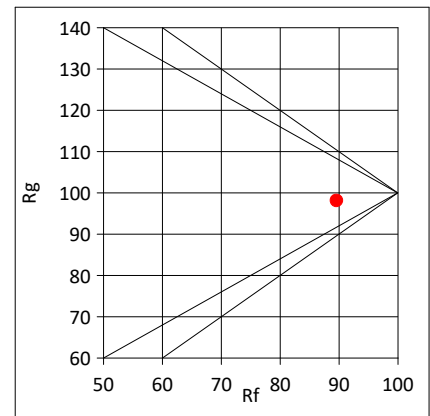
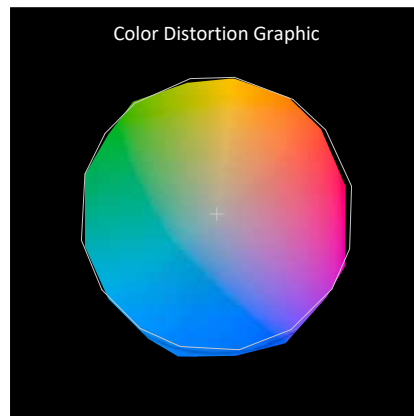
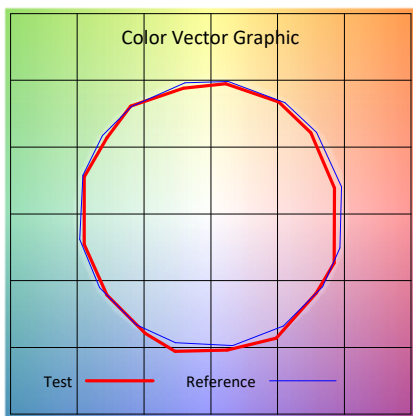
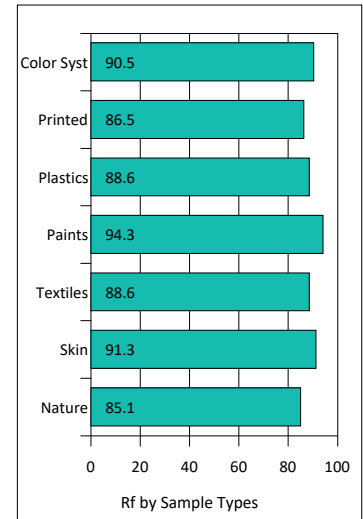
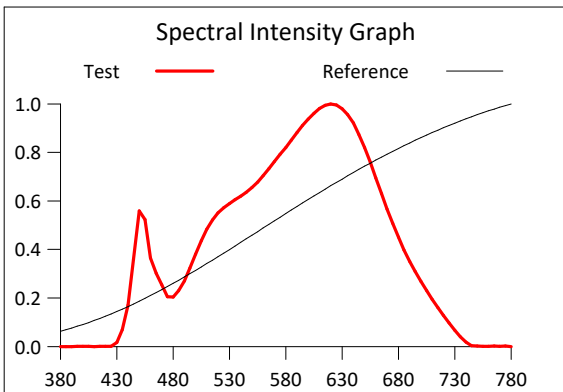
Manufacturer : -

Humidity : -%

Test Date : 2024-02-15

Rf: 89.6 CCT(K): 3056 u': 0.2477
 Rg: 98.1 LER: 308.1 Duv: 0.0024 v': 0.3491

Hue Bin	Rf	Graphic Shifts (%)	
		Chroma	Hue
1	88.3	-5.5%	0.1%
2	90.7	-3.9%	2.2%
3	89.5	-2.0%	4.2%
4	93.6	-2.1%	1.5%
5	91.9	-3.7%	2.1%
6	96.5	0.4%	0.3%
7	91.7	-3.7%	-0.5%
8	96.7	-1.3%	1.0%
9	91.4	-2.6%	4.5%
10	85.1	-1.7%	7.5%
11	85.0	1.7%	9.1%
12	88.4	6.3%	0.9%
13	91.3	2.6%	-4.7%
14	85.6	4.5%	-9.3%
15	86.5	-1.3%	-6.8%
16	82.7	-2.0%	-12.1%



IES TM-30-2015 Test Report

Product Mark

Product Type : OR300F52324OS1

Manufacturer : -

Temperature : 'C

Humidity : -%

Operator : -

Test Date : 2024-02-15

Remark :

