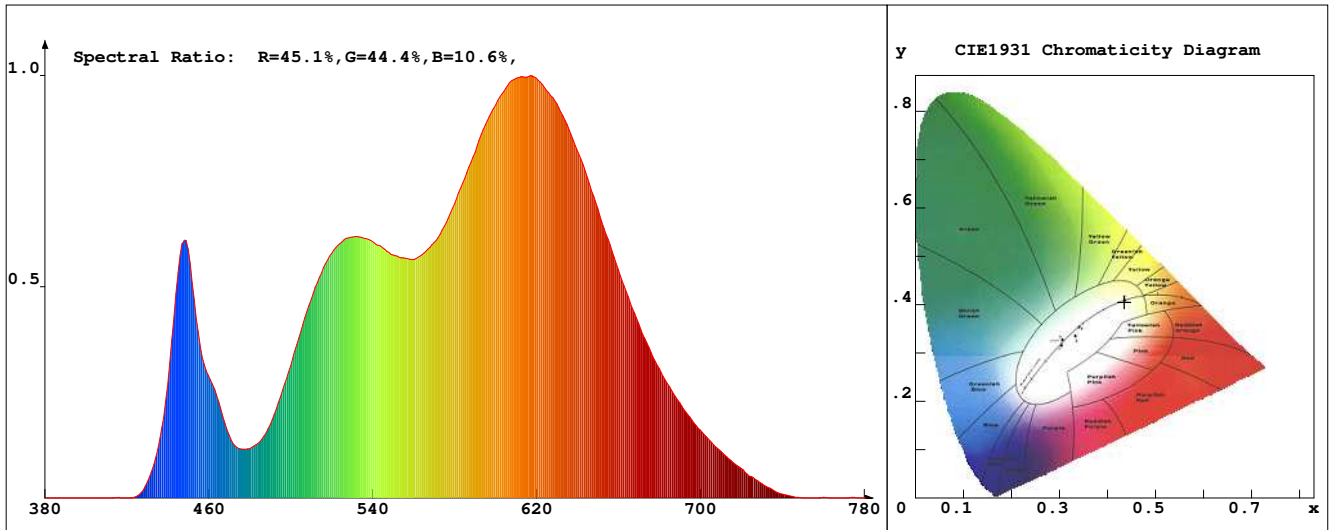


LED Test Report

Product Mark

Product Type : OR300F523200M2
 Temperature : 'C
 Operator : -
 Remark :

Manufacturer : -
 Humidity : -%
 Test Date : 2024-02-15



Chroma Parameters

Chro.Coor.:x=0.4351 y=0.4052 u=0.2489 v=0.3477 duv=0.0007
 CCT: 3041K Dominant Wave.:582.4nm Purity:52.2% Centre Wave:586.4nm
 Flux RGB Ratio:R=23.8%,G=74.9%,B=1.3% Peak Wave:615.7nm Half Width:150.3nm

Rendering Index:Ra= 93.2 CRI= 90.0

R1 =96	R2 =96	R3 =95	R4 =94	R5 =94	R6 =97	R7 =93	R8 =81
R9 =50	R10=89	R11=91	R12=82	R13=96	R14=96	R15=88	
PPF:11.285umol/s (400-700nm)			PRF:2.3mW (400-700nm)			PAR:2.1mW (400-700nm)	

Photo Parameters

Flux:779.84lm Effi.:106.9lm/W Radiant:2374.4mW Iv:0.0mcd
 Scotopic Flux:1096.2Plm Effi.:0.0Plm/W S/P:1.4
 Efficiency:0.00 Effi Level:A++ (EU 874-2012) Photon Flux:11554.000umol/s (380-780nm)

Ele. Parameters

Forward Current:If=304.0mA Reverse Voltage:Vr=5.00V
 Forward Voltage:Vf=24.00V Reverse Current:Ir=0.00uA
 Power:P=7.301W

Instrument state

Instrument:Lisun Integral Time: 187.945ms VPeak: 12504
 VDark: 1211 Scan Range: 380-780nm Product ID: 201508924

IES TM-30-2015 Test Report

Product Mark

Product Type : OR300F523200M2

Temperature : 'C

Operator : -

Remark :

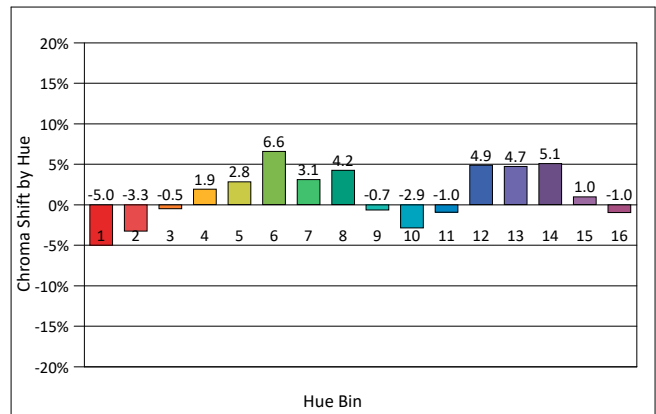
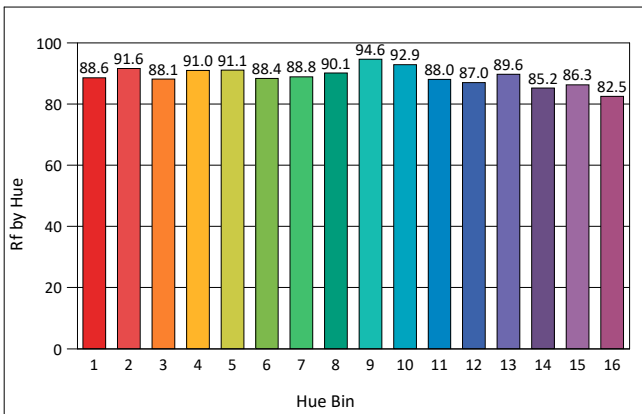
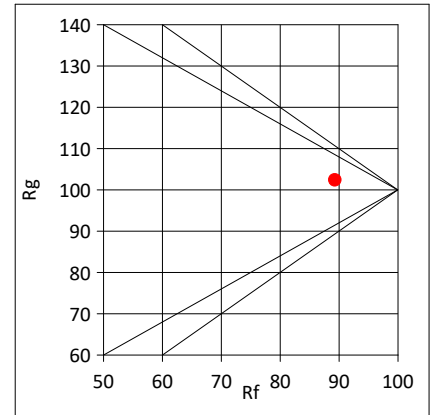
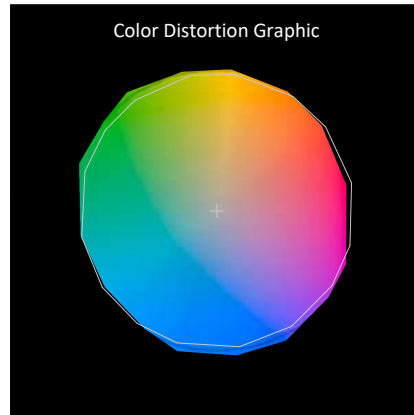
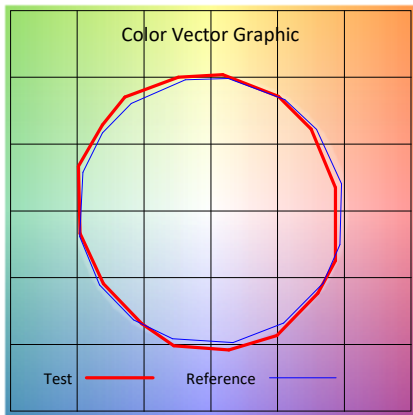
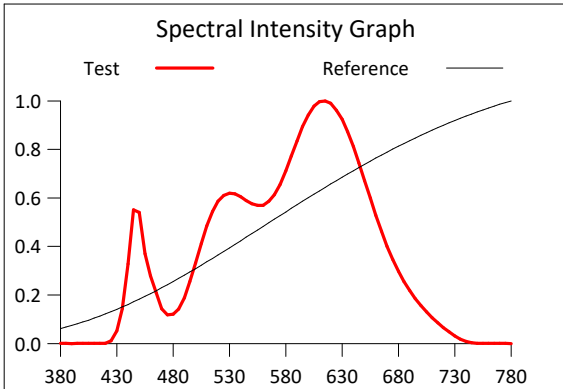
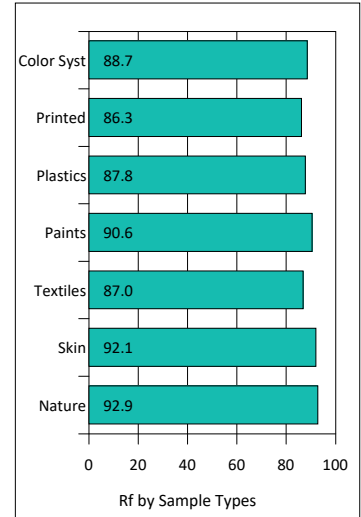
Manufacturer : -

Humidity : -%

Test Date : 2024-02-15

Rf: 89.3 CCT(K): 3041 u': 0.2489
 Rg: 102.4 LER: 322.2 Duv: 0.0007 v': 0.3477

Hue Bin	Rf	Graphic Shifts (%)	
		Chroma	Hue
1	88.6	-5.0%	-1.9%
2	91.6	-3.3%	2.6%
3	88.1	-0.5%	5.4%
4	91.0	1.9%	4.4%
5	91.1	2.8%	4.6%
6	88.4	6.6%	1.4%
7	88.8	3.1%	-5.0%
8	90.1	4.2%	-3.8%
9	94.6	-0.7%	-2.3%
10	92.9	-2.9%	0.8%
11	88.0	-1.0%	6.6%
12	87.0	4.9%	2.0%
13	89.6	4.7%	-4.1%
14	85.2	5.1%	-9.4%
15	86.3	1.0%	-8.1%
16	82.5	-1.0%	-12.3%



IES TM-30-2015 Test Report

Product Mark

Product Type : OR300F523200M2

Manufacturer : -

Temperature : 'C

Humidity : -%

Operator : -

Test Date : 2024-02-15

Remark :

