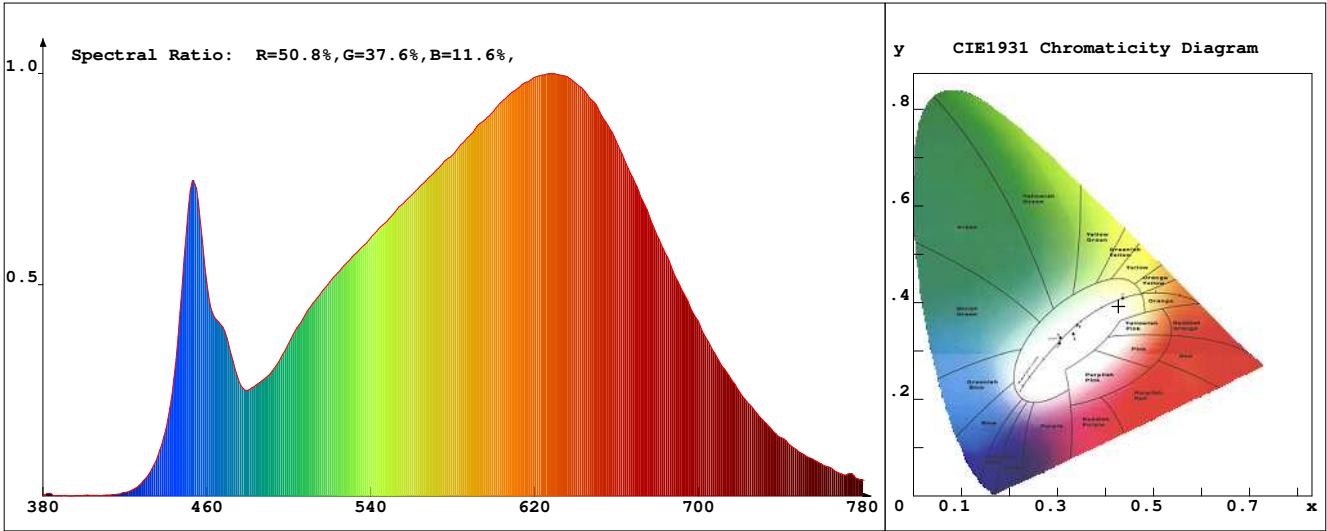


LED Test Report

Product Mark

Product Type : OR300F52240CA2-W3
 Temperature : 'C
 Operator : -
 Remark:

Manufacturer : -
 Humidity : -%
 Test Date : 2024-02-15



Chroma Parameters

Chro.Coord.:x=0.4270 y=0.3926 u=0.2491 v=0.3435 duv=-0.0033
 CCT: 3078K Dominant Wave.:583.8nm Purity:46.0% Centre Wave:604.3nm
 Flux RGB Ratio:R=23.2%,G=74.7%,B=2.1% Peak Wave:628.6nm Half Width:170.9nm

Rendering Index:Ra= 93.8 CRI= 91.7

R1 =94	R2 =97	R3 =97	R4 =93	R5 =94	R6 =95	R7 =93	R8 =87
R9 =71	R10=92	R11=93	R12=79	R13=95	R14=98	R15=93	
PPF: 6.773umol/s (400-700nm)			PRF: 1.4mW (400-700nm)			PAR: 1.2mW (400-700nm)	

Photo Parameters

Flux:435.11lm Effi.:86.3lm/W Radiant:1489.4mW Iv:0.0mcd
 Scotopic Flux:639.0Plm Effi.:0.0Plm/W S/P:1.5
 Efficiency:0.00 Effi Level:A++ (EU 874-2012) Photon Flux:7405.150umol/s (380-780nm)

Ele. Parameters

Forward Current:If=210.0mA Reverse Voltage:Vr=5.00V
 Forward Voltage:Vf=24.02V Reverse Current:Ir=0.00uA
 Power:P=5.051W

Instrument state

Instrument:Lisun Integral Time: 337.897ms VPeak: 13864
 VDark: 1387 Scan Range: 380-780nm Product ID: 201508924

IES TM-30-2015 Test Report

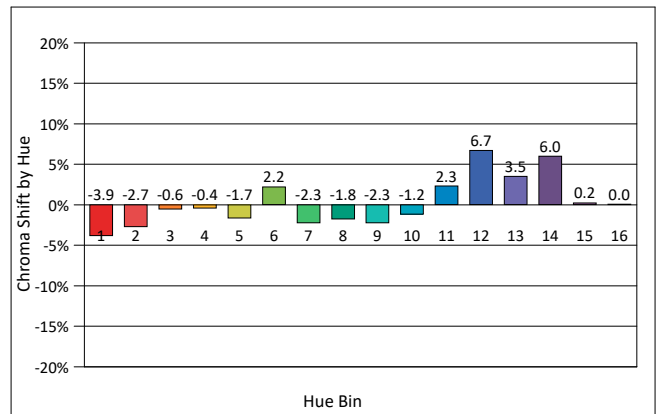
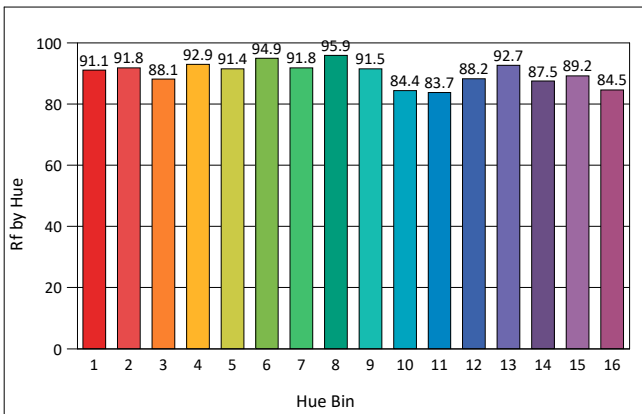
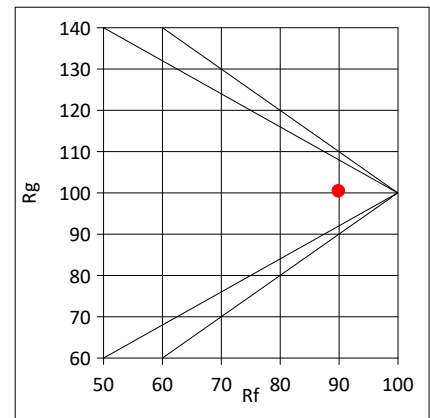
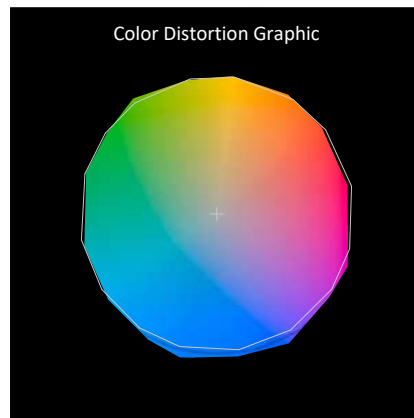
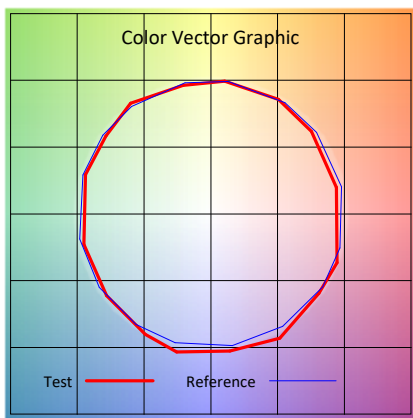
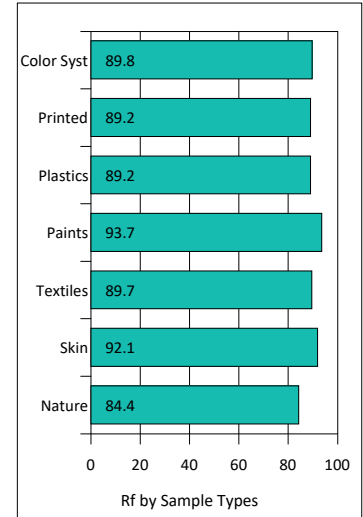
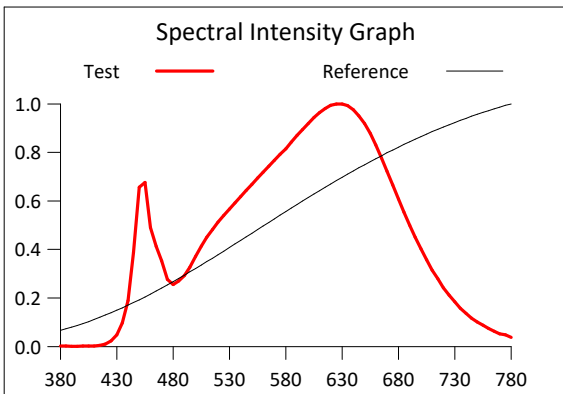
Product Mark

Product Type : OR300F52240CA2-W3
 Temperature : 'C
 Operator : -
 Remark :

Manufacturer : -
 Humidity : -%
 Test Date : 2024-02-15

Rf: 89.9 CCT(K): 3078 u': 0.2491
 Rg: 100.4 LER: 275.9 Duv: -0.0033 v': 0.3435

Hue Bin	Rf	Graphic Shifts (%)	
		Chroma	Hue
1	91.1	-3.9%	0.4%
2	91.8	-2.7%	2.7%
3	88.1	-0.6%	5.3%
4	92.9	-0.4%	2.5%
5	91.4	-1.7%	1.9%
6	94.9	2.2%	-0.8%
7	91.8	-2.3%	-1.0%
8	95.9	-1.8%	-0.5%
9	91.5	-2.3%	4.6%
10	84.4	-1.2%	8.1%
11	83.7	2.3%	9.9%
12	88.2	6.7%	2.7%
13	92.7	3.5%	-2.8%
14	87.5	6.0%	-6.7%
15	89.2	0.2%	-5.5%
16	84.5	0.0%	-11.1%



IES TM-30-2015 Test Report

Product Mark

Product Type : OR300F52240CA2-W3

Manufacturer : -

Temperature : 'C

Humidity : -%

Operator : -

Test Date : 2024-02-15

Remark :

