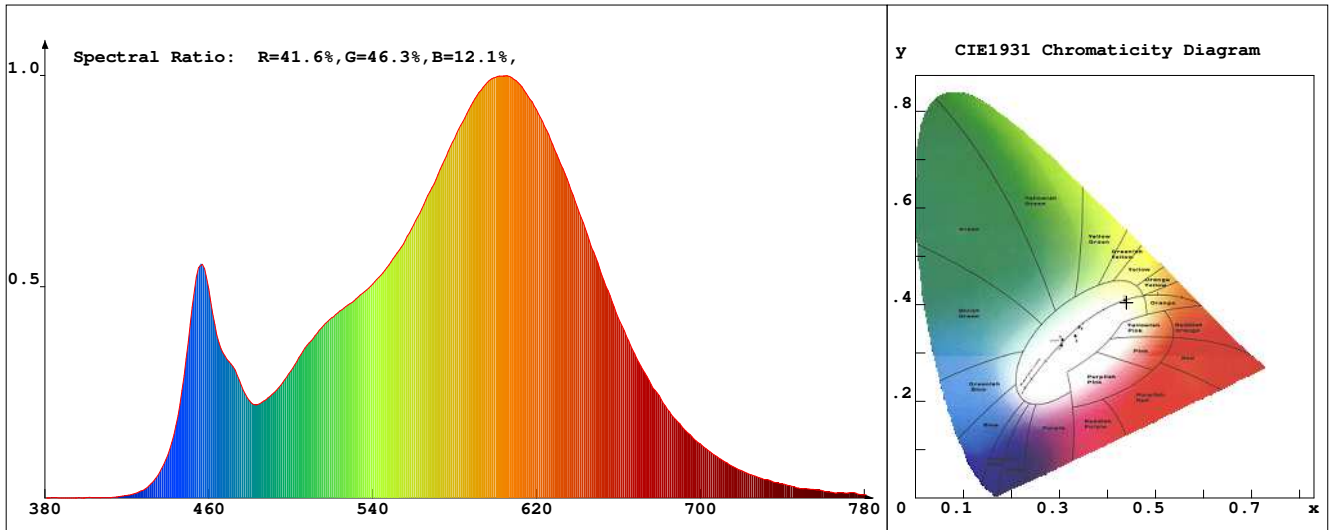


LED Test Report

Product Mark

Product Type : E52-300-1208Z2
 Temperature : 'C
 Operator : -
 Remark :

Manufacturer : -
 Humidity : -%
 Test Date : 2023-12-22



Chroma Parameters

Chro.Coor.:x=0.4395 y=0.4041 u=0.2522 v=0.3479 duv=-0.0003
 CCT: 2958K Dominant Wave.:583.1nm Purity:53.2% Centre Wave:595.8nm
 Flux RGB Ratio:R=22.2%,G=75.9%,B=1.9% Peak Wave:601.8nm Half Width:114.4nm

Rendering Index:Ra= 81.2 CRI= 78.9

R1 =80	R2 =92	R3 =93	R4 =78	R5 =81	R6 =92	R7 =79	R8 =54
R9 =0	R10=83	R11=77	R12=72	R13=83	R14=97	R15=72	
PPF:13.159umol/s (400-700nm)			PRF:2.7mW (400-700nm)			PAR:2.4mW (400-700nm)	

Photo Parameters

Flux:993.69lm Effi.:107.7lm/W Radiant:2796.3mW Iv:0.0mcd
 Scotopic Flux:1344.1Plm Effi.:0.0Plm/W S/P:1.4
 Efficiency:0.00 Effi Level:A++ (EU 874-2012) Photon Flux:13563.600umol/s (380-780nm)

Ele. Parameters

Forward Current:If=384.0mA Reverse Voltage:Vr=5.00V
 Forward Voltage:Vf=24.03V Reverse Current:Ir=0.00uA
 Power:P=9.231W

Instrument state

Instrument:Lisun Integral Time: 178.615ms VPeak: 15640
 VDark: 1260 Scan Range: 380-780nm Product ID: 201508924

IES TM-30-2015 Test Report

Product Mark

Product Type : E52-300-1208Z2

Temperature : 'C

Operator : -

Remark :

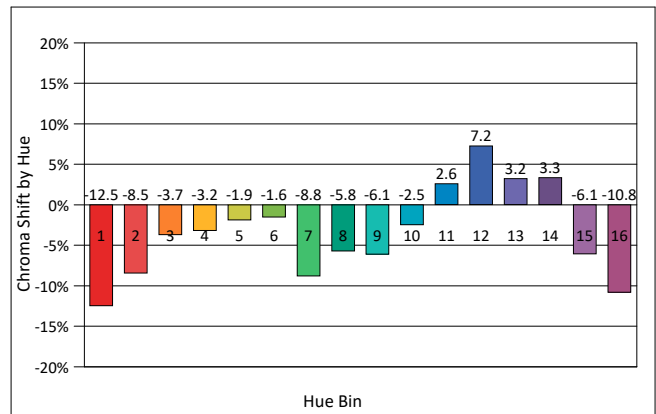
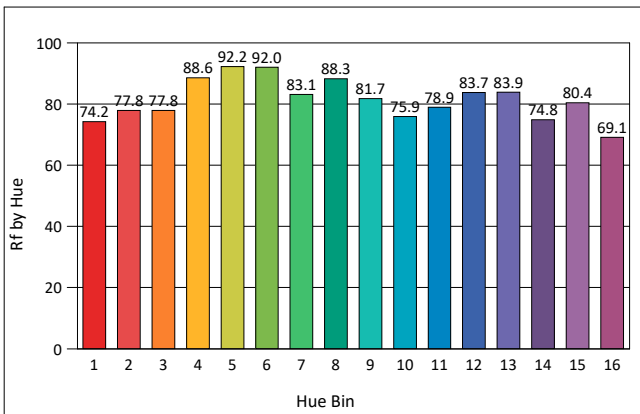
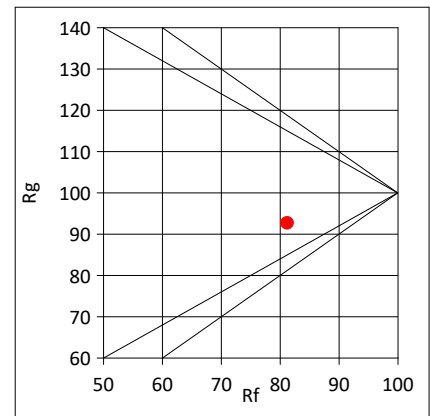
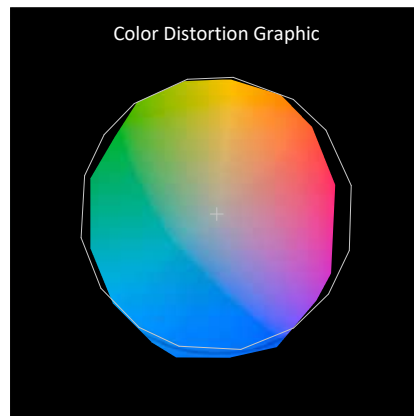
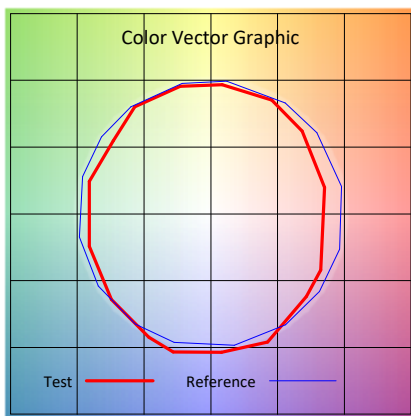
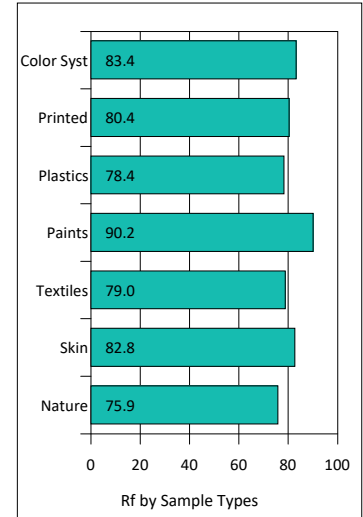
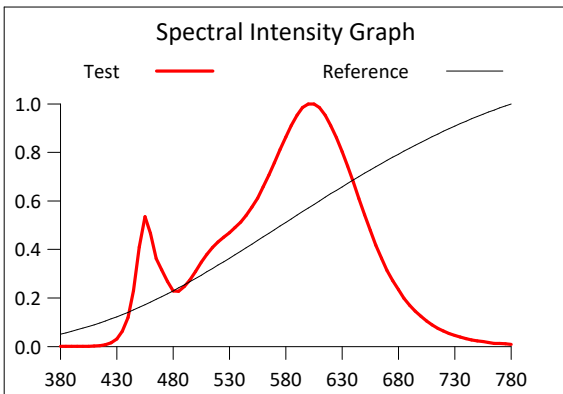
Manufacturer : -

Humidity : -%

Test Date : 2023-12-22

Rf: 81.2 CCT(K): 2958 u': 0.2522
 Rg: 92.7 LER: 335.3 Duv: -0.0003 v': 0.3479

Hue Bin	Graphic Shifts (%)		
	Rf	Chroma	Hue
1	74.2	-12.5%	1.7%
2	77.8	-8.5%	7.0%
3	77.8	-3.7%	9.7%
4	88.6	-3.2%	2.8%
5	92.2	-1.9%	2.0%
6	92.0	-1.6%	-2.5%
7	83.1	-8.8%	-2.7%
8	88.3	-5.8%	2.4%
9	81.7	-6.1%	8.3%
10	75.9	-2.5%	13.7%
11	78.9	2.6%	13.9%
12	83.7	7.2%	0.7%
13	83.9	3.2%	-10.3%
14	74.8	3.3%	-18.3%
15	80.4	-6.1%	-8.5%
16	69.1	-10.8%	-18.1%



IES TM-30-2015 Test Report

Product Mark

Product Type : E52-300-1208Z2

Manufacturer : -

Temperature : 'C

Humidity : -%

Operator : -

Test Date : 2023-12-22

Remark :

